



GRAND SLAM



KICK-OFF



CATALOG \$100

Nuccio's  
Nurseries

GROWERS OF  
RARE CAMELLIAS  
SINCE 1935

1963-64



# Welcome Visitors to



3555 CHANEY TRAIL, ALTADENA, CALIF.  
Telephone: Area Code 213 SYcamore 4-3383

Most of our customers come to us through the United States mail, but we enjoy having visitors stop in to see us, and we cordially invite you to do so whenever you can. We are open daily except **Wednesday**, and business hours are from 8:00 to 5:00. During the period from May 1 through October 20 we are also closed on Sundays.

## NEW VARIETIES

Our breeding and testing program evaluates each year literally hundreds of camellias and azaleas, both of our own and other breeders' origin. To our already very large list of varieties we have added many more this year, dropping some which have become displaced by superior new strains.

This map will help you to drive straight to our nursery when you're in town. We very much like to meet our friends from all over camellia-land, and we'll be most happy and proud to show you our nursery. Business hours are from 8:00 to 5:00 every day except **Wednesday**. From May 1 to October 20 we are also closed on Sundays.



## PLEASE READ BEFORE ORDERING

All of our Camellias are container grown (1-gal., 3-gal., 5-gal. and 6-gal.) and will be shipped in their containers. Handled this way Camellias can be shipped and planted every month of the year. Notice to residents of the states of Alabama, Florida, Georgia, Louisiana, Mississippi, North Carolina, South Carolina, Tennessee and Texas. All shipments of Camellias into these states will be bare-rooted, reballed in peat moss, burlapped and wrapped in waterproof paper. We are experienced in shipping bare-rooted Camellias and have found the above method so successful that we are giving the same guarantee we give our container grown Camellias. We have successfully shipped bare-root Camellias all months of the year, but for best results we advise shipment from mid-October through April.

All azaleas offered in this catalogue are 3 years old or more and are grown in 1-gallon containers and shipped in same. All stock will average 6 x 8" heads (spread) with the exception of some of the Satsukis and Kurumes. These will be 6 x 6". Many of the varieties such as the Southern Indicas and Rutherfordianas will be much larger (8 x 10" and 10 x 12"). Being container grown, these azaleas can be shipped safely throughout the year. **NOTICE TO RESIDENTS OF OREGON AND WASHINGTON:** These states do not allow the shipment of azaleas.

## GUARANTEE

We give no guarantee that our stock will live and grow; but we do guarantee our stock to be well rooted, well grown, true to name and properly packed for shipments.

Claims for shortages and errors must be made immediately upon receipt of shipment and we will gladly rectify our mistake, but in no instance will our liability be more than the purchase price. Our responsibility ceases upon delivery to forwarding companies and any claims for damages en route are to be made upon them by the purchaser. Risks and costs of transportation belong to purchaser.

**WE ARE PROUD** of our Shipping Department and we have countless complimentary letters from out-of-State purchasers of our Camellias. All stock is expertly and efficiently crated and packed in strong lightweight crates and tamper-proof cartons. Every order, regardless of size, is fitted into custom-built crates.

**IN THE PAST** ten years we have shipped Camellias and Azaleas throughout the United States and many foreign countries with the utmost success, and feel confident that with our experience our customers are receiving the finest quality plants as a result of the best packing and crating possible.

We are exerting every effort to produce the very best stock that can be grown, and in our 27 years of experience we believe we have never offered bigger and better values than we are this season. We secure our propagating wood from only the best type of plants, and by doing this we furnish you stock that is the best possible for you to get anywhere, regardless of price. If you will give us your order, we know you will be more than pleased with our quality plants.

## TERMS OF SALE

Please send your remittance with your order. California customers add 4% sales tax to total. With first order be certain to use the special order blank for the \$1.00 catalog refund on minimum orders of \$7.50. Prices in this catalog are subject to change without notice and are all F.O.B. Altadena, California. Please specify the way you wish to have us make shipment (express, motor freight, railroad freight or air freight). When no instructions are given, we will ship via Railway Express. On orders of \$20.00 or more, there is no crating charge, but if your order amounts to less than \$20.00, please add \$1.00 for the first plant and 25c for each additional plant ordered in order to cover crating costs. Because of our specially designed container for shipping azaleas, there will be no crating charges for azaleas if ordered in groups of 6, 12, 18, 24, etc.

## NOTICE TO NURSERIES AND FLORISTS

We no longer allow a trade discount from this catalogue for out-of-state orders due to the high cost of crating and handling.



# How to Grow and Care for Fine Camellias



SINGLE



SEMI-DOUBLE



ROSE FORM



ANEMONE FORM



PEONY FORM



FORMAL DOUBLE

## What Are Camellias?

Among plant families, THEACEAE is one of the smallest, and is divided into some sixteen genera of which the most important is *Camellia*. Camellias (in their 80-odd species) are semi-tropical to temperate plants that are used primarily as ornamental shrubs. Two of the species have become very important as economic plants. *C. sinensis* is grown for its leaves from which tea is made. From the species *C. sasanqua* the seeds are gathered and crushed to extract the oil. From this oil a high quality face cream and hair oil is made. The ornamental species that have become important as flowering shrubs will be taken up later, in the order of their importance or popularity.

The camellia is an ornamental shrub or small tree. It is evergreen, relatively slow growing and reaches maturity in 100 to 125 years. It attains a height of fifteen to thirty feet, depending on the variety. It is used as a shrub rather than a tree because of its slow growth.

Camellias are natives of China, as far south as Cochin, northern Siam, inland China to Yunnan province, coastal China north into Korea. Some species are found on the islands of Japan and Formosa.

Camellias were introduced to the United States, by way of England and France, in 1798. They were first sold as glass house plants in New York, Boston and Philadelphia. A short time later they were widely planted as garden shrubs throughout the southeastern coastal states. The first camellias arrived on the Pacific Coast about 1850. A shipment of plants was sent by boat around the Horn and up the Sacramento river to a nurseryman in Sacramento. Many of these original plants are still growing and, whenever possible, are being moved to the State Capitol grounds.

## CAMELLIA JAPONICA

The forms of this species are the most popular of all camellias and well deserving of this favor. They are broadleaved evergreen plants with beautiful glossy foliage. They are shade loving, but prefer filtered or high shade. They boast a flower form from the single to the complete double, and in between will be found peony form, semi-double, incomplete double, loose peony, rose form, and anemone form. Their color range is from pure white to creamy white, from flesh pink to deep rose, and from scarlet red to black red. Were this not enough variety in color, there are still the variegated flowers. Among these are the pinks blotched white, the reds blotched or marbled white, flowers that are shaded from pink to white, and the whites with candy stripes of pink or red or both.

The flowers range in size from two to six inches across. The keeping quality of the blooms is unsurpassed which makes them ideal for cut flowers or for use as corsages. The fall and winter blooming period sets them apart from most shrubs, and intensifies their desirability as garden or greenhouse shrubs. The varieties bloom at different times. For this reason they are divided into four groups: "E," early bloom (October to December); "EM," early mid-season (December to January); "M," mid-season (February through March); "L," late (April to May). These blooming periods will vary as much as a month earlier for warm areas, and a month later for cooler areas.

There are some twenty-five hundred or more named varieties of *C. japonica*, and it would be impossible to say that any selection of fifty or sixty varieties is the best. Personal likes and dislikes are to be considered, but the following listing and color illustra-

tions are of some of the most popular. For the most part they are older varieties that continue to be popular; others are new but have "proven" themselves.

## Camellia Sasanqua, C. Hiemalis, C. Vernalis

*C. sasanqua*, *C. hiemalis*, and *C. vernalis* are closely allied species.

The foliage and flowers resemble each other and all will stand full sun to light shade. The foliage and flowers are smaller than the japonica group, and almost all are fall flowering, starting as early as September. This early fall blooming period is one of the outstanding features of these plants. The flowers range in size from two inches to three inches, and while the bloom shatters on most varieties after three or four days, they are so floriferous that they present a mass bloom which lasts over a three-month period. They are evergreen and the foliage is glossy dark green about the size of the average rose leaf. Some varieties grow in columns, others are spreading, some globular, others resemble the fir tree in form. This variation in growth habit makes them ideal to use as ground covers, espaliers, for screening, hedge, or almost any job at which one would want to put a plant to work.

The color range is white, many shades of pink, some reds and white with pink or red edging on each petal. Bright golden-yellow stamens enhance their beauty and charm. The versatility of these camellia species makes them highly desirable as garden shrubs, but their potentials are, as yet, to be "discovered" by the average gardener.

## Camellia Reticulata

*Camellia reticulata* has a most startling and beautiful flower. Most varieties have huge blooms that measure up to nine inches. The petals are wavy and are covered with a "glass beading" which gives the flower great depth and beauty. The flower form is from semi-double to double, and the stamens are golden yellow. For the most part the varieties are fast-growing and tall with a rather open habit. They have only about one-third the foliage of the other camellia species. This should be kept in mind when watering and feeding. Because the plant has less foliage it uses less water than other camellias. Because it has a shorter period of growth, it requires less fertilizer. While the shrub seems to stand full sun quite well, the flower does not. For best results give them morning sun or filtered shade.

## Camellia Hybrids

Hybridization of camellia species is relatively new to the camellia world, and has not been carried on to any great extent until recently. The hybrid "J. C. Williams" set off a chain reaction among American hybridists, and at this time much work is being done in this field. Results have been very gratifying and extraordinary plants are being developed.

The J. C. Williams hybrid class shows a mass of blooms over a three-month period or more. The flowers are large, keep well, and are very weather resistant. New shades are being shown but as yet they do not have the full color range of the japonicas. They are, in time, expected to cover a wider range of color than any of the species groups. The foliage is particularly beautiful. The bush is compact and full, with many different growth habits. To anyone who loves plants this is an exciting world, and the future looks bright and full of wondrous events. Current breeding efforts are centered on bringing the great beauty of camellias to a wider climatic belt with more cold hardiness, also earlier fall blooming.

(Continued on page 6)



## NEW TOP PERFORMANCE CAMELLIAS

After more than 27 years' experience in the growing of camellias, we are proud to offer our friends and customers the following list of new, beautiful and outstanding seedlings. All passed the test of time—five full blooming seasons—which we feel confident is necessary to judge and eliminate all those that do not excel in beauty, style, distinctiveness, texture, growth habit, and, above all, performance.

Of the five to seven thousand seedlings that we bloom annually, 20 to 25 are selected for further testing, and from these only 3 or 4 survive our 5-year blooming test. With this program, we sincerely hope to introduce only the best in new varieties to the Camellia world—for 1963, the beautiful Grand Slam, Kickoff and Hit Parade.

**GRAND SLAM (N #5908)**—Large to very large (5½ to 6") wavy petalled, semi-double to anemone type. Beautiful, brilliant, clear red with heavy, large, dark green foliage. Vigorous, bushy, spreading growth. E.M. 12-18" \$7.50\*; 18-24" \$10.00\*; 24-30" \$15.00\*; 30-36" \$20.00\*

**KICKOFF (N #5715)**—The first of the japonicas to bloom, this outstanding new seedling starts blooming in early September and continues through April. Very large, loose to full peony; light pink, striped and speckled rose-red. Vigorous, upright growth. E.L. 12-18" \$7.50\*; 18-24" \$10.00\*; 24-30" \$15.00\*; 30-36" \$20.00\*

**HIT PARADE (N #5505)**—Beautiful, large to very large semi-double, coral-red. Narrow, heavy foliage. Vigorous, upright growth. A show flower that has great landscape value. M. 12-18" \$6.00\*



**DISNEYLAND**—A beautiful rose pink semi-double to anemone form with variegated petaloids makes this very large, 6 to 7', camellia distinctive and outstanding. Vigorous, bushy, upright growth, with medium sized, handsome foliage. M-L. 12-18" \$7.50\*; 18-24" \$10.00\*

**ALEXIS SMITH**—A sure winner, breathtaking camellia. Very large, irregular, semi-double; bluish pink with deeper pink edges. Medium, very dark green foliage. Bushy, upright growth. M. 12-18" \$7.50\*; 18-24" \$10.00\*

**SILVER ANNIVERSARY**—Very large semi-double white with irregular petals intermixed with golden stamens. Handsome shrub with vigorous, bushy, upright growth. Long blooming season. E-M. 12-18" \$7.50\*; 18-24" \$10.00\*; 24-30" \$15.00\*

**DAZZLER**—This fine new sasanqua, with its brilliant rose-red, semi-double blossoms, will win friends wherever seen and grown. Dark green foliage; vigorous, upright growth. 12-18" \$2.50; 18-24" \$3.50; 24-30" \$7.50; 30-36" \$10.00\*

**CARA MIA**—This outstanding beauty blooms from mid-November through February. A 5-inch semi-double pink, shading to bluish pink in center petals. Beautiful golden stamens interspersed among the petals. Vigorous, upright. E-M. 12-18" \$7.50\*; 18-24" \$10.00\*

**MAROON AND GOLD**—This seedling of Kuro Tsubaki gives us a distinctive color—rich maroon-red in a small loose peony with beautiful golden stamens intermixed. Profuse bloomer with vigorous, upright growth. M-L. 12-18" \$5.00\*

## A NEW CAMELLIA RETICULATA SEEDLING 12-18" \$10.00\* 18-24" \$15.00\*

'William Hertrich'

24-30" \$20.00\*

Parentage—"Lion head" (open pollination) originated in J. H. Asper's nursery in Escondido, California. Seed harvested and planted in fall of 1954. First flower in spring of 1960. The plant is a vigorous upright grower with interesting dull green foliage. **Leaves:** range in size from 8 to 10 cm. long by 4 to 6 cm. broad, with fine serrate margins and tapering apices, venation, perceptible on the upper surface, pronounced on the under side. The flowers above average in size are of incomplete double form, (HCC Cherry 722) in color, and range in size from 14 to 17 cm. (5½ to 6¾ inches) broad, and 9 cm. (3½ inches) high fully expanded. The pale green **Calyx** of the flower is about 5 cm. across, and the segments are silky. The flower carries from 18 to 20 petals of excellent substance, most of them heavy undulated. The outer ones rather large and somewhat reflexed, the inner ones are smaller in size and are arranged loosely in more or less upright position some of them folded and intermixed with stamens about 4 cm. long, arranged in fascicles and attached to the base of some petals, topped with greyish-yellow anthers. Flowering time in mid-season. All points concerning this seedling is an improvement over its parent 'Lion head', and it should appeal to many, if not all, collectors of Camellias, not only for its beautiful flowers but also for its interesting foliage as an ornamental plant.

*W. Hertrich*

During the past five years I have bloomed hundreds of Reticulata seedlings. This particular one I sincerely believe is worthy of introduction. The plant is both vigorous and bushy. In my opinion it is the finest Reticulata variety in existence. It will restore your confidence in the species.

*J. Howard Asper*





## Landscaping

The great beauty and diversity of the flowers plus their wonderful glossy green foliage, united with good growth habits, makes the camellia an ideal plant for landscape uses. All manner of growth habits are to be found which make them one of the most versatile of shrubs. Low, squat varieties are to be found for use in areas where plants must remain low; tall open growers for use as background plants; broad willowy varieties to use as espaliers on fences or trellises; column forms for accent plants, and, in the sasanquas, spreading forms for use as ground covers by use of occasional pruning. Camellias are very well adapted to container culture. They may be grown in pots or tubs, enabling one to move them about as desired. They make a particularly beautiful hedge and one which requires a minimum of pruning. When used in combination with other plants, nothing can or will complement them better.

## Culture

### PREPARATION OF THE SOIL

Basically all camellias require the same culture. They prefer a well-drained soil that is high in humus content and just slightly acid. The acidity of soil for camellias has been exaggerated as they do equally well in soil that is neutral or one that is quite acid with a pH of 5.5. A soil that is more acid than 5.5 will slow the growth.

In preparing the soil for planting in the ground, mix equal portions of sandy loam and peat moss, by volume. If leaf mold is available, it may be used in place of peat moss. The best types of molds come from redwood, pine, eucalyptus (at least one year old), and oak.

For container growing, use a mixture of one part peat moss and one part loam. Add to this 10% fine, sharp, and uniform sand.

### PLANTING AND STAKING

Dig the planting hole twice as large as the root ball and one and one-half times as deep. Fill the bottom of the hole with the prepared soil and tamp down firmly so that the top of the root ball, when placed in the hole, is one inch ABOVE the soil surface, as there will be some settling. The only way camellias are temperamental is in the depth of the planting. The air requirement of the root is high and, when planted too deep, the roots will smother. The root crown should never be more than two inches below the surface of the soil. Fill in around the sides of the root ball with this same mixture, tamping it down firmly with the feet as you fill, then mound soil three inches high, in the form of a saucer, on the outside rim of the planting hole. Fill this saucer with water.

Some camellias are quite willowy, and when small should be staked. Place the stake close to the main trunk and push into the ground four or five inches. Tie the main trunk loosely to the

stake, using as many ties as necessary to bring the plant to an upright position. When the wood matures and hardens, the stake may be removed.

### WATERING

Camellias should be moist at all times, but caution should be taken against their being WET at all times. Water well and deeply, but only as often as your own local weather conditions demand. Too much water too often will cut off the air the roots must have. During the flowering period, watering should be watched, as the mature flower is 90% water and a drying out of the plant can cause small blooms, as well as bud drop. Camellias will use large quantities of water during the summer growing periods.

### FERTILIZING

Fertilizing or feeding should start with the first signs of growth, even though the plant is still blooming. Plants should be fed only as needed, and caution taken never to over-feed. Camellias that have been injured with over-fertilizing take several seasons of special care to recuperate. Cottonseed meal or commercial food specifically for camellias should be used. Your local nurseryman or garden shop will carry the prepared mixture best suited to your own local conditions. Follow the directions as printed on the package. If the plant is dry, water well the day before feeding; never feed a dry plant.

Never feed a sick plant, such as yellow veined foliage, browned edges on foliage or a plant that has lost most of its leaves. These plants are best helped with replanting in new soil or treating with one of the many new chelated irons on the market or soil conditioners. It is advisable to consult your local nurseryman as to which treatment would be best.

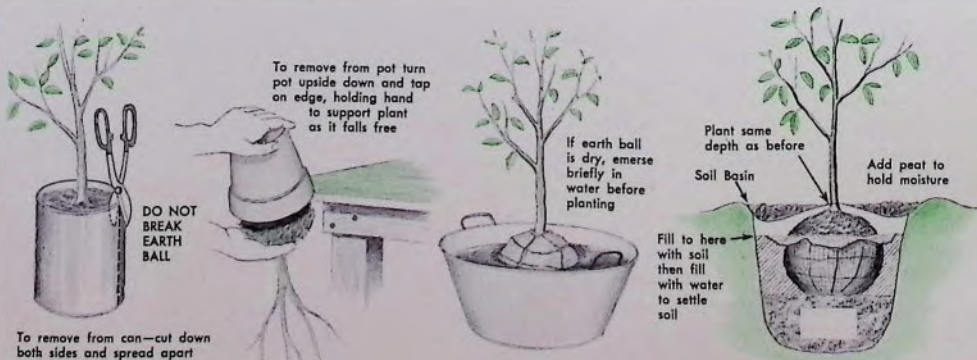
For plants grown in containers, use one-half the amount as directed. Feed every 6 to 8 weeks from April through September, or a minimum of three feedings spaced equally apart from April through September.

### CARE AFTER PLANTING

Other than feeding and watering, camellias require very little care. Some insect and pest control is necessary to insure a healthy plant. Scale and mites are the most serious threat as they extract the plant juices and interfere with the normal development of foliage and stem growth.

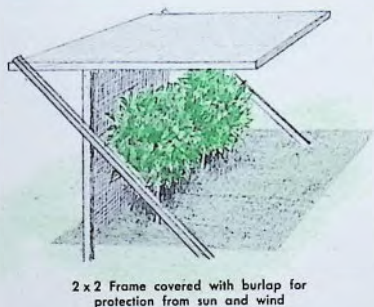
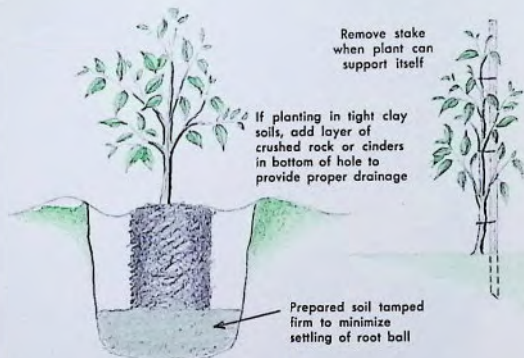
Mites can cause a premature dropping of foliage, and in severe cases of infestation can cause an almost complete defoliation of the plant. Both mites and scales can be controlled with a spray mixture of 2% summer oil and a 200 to 1 ratio of Malathion mixed in water. Spray once in April or May and again in September. For mites, a follow-up spraying ten days after the initial spraying is recommended to kill the egg hatch.

A program of general spraying every spring (April or May) and again in the fall (September or October) before the blooming season will insure healthy, pest-free plants. In colder sections of the country avoid, if possible, spraying in the late fall or winter, as a severe freeze causes much damage when an oil spray is used.



To remove from can—cut down both sides and spread apart





Generally speaking, camellias rarely need spraying, so consult your local nurseryman and make certain that spraying is necessary. Very few fungi attack camellias, and a general spray mixture should control these. *Sclerotinia camelliae*, commonly called petal blight, flower blight or flower rot, is a fungus that attacks camellia flowers. There is no known spray material that will eradicate this disease. The spore is air borne from small black to dark brown toadstools, and when coming in contact with camellia blooms a rotting of the flower occurs. The infected flower falls to the ground, acting as a carrying body, and the following spring when humidity is high and temperatures run 60 degrees or more, the toadstools develop. This life cycle can be broken by keeping all blooms picked up and burned until such time as all flower rotting has stopped.

#### PROTECTION

*C. japonica*, *C. reticulata* and the hybrids need protection from hot mid-day sun. For the flower's sake, the whites and pale pinks will need more shade than the deeper colors. Shade is a very relative term; in climates where humidity is high, camellias can stand more sun than in climates that are hot and dry. *C. sasanqua*, *C. vernalis* and *C. hiemalis* are able to stand full sun even in hot dry climates, but do equally well in light shade.

A continuous draft is death to camellias, and a location such as a breezeway or tunneled area should be avoided.

Camellias should be protected from strong winds for the sake of the flowers. As to protection from cold, *C. sasanqua*, *C. vernalis* and *C. hiemalis* will stand temperatures of 10 degrees above zero to 5 degrees below zero with no injury. The japonicas will stand temperatures to 5 degrees above zero but the complete double

flower types will have buds frozen and destroyed at this temperature.

*C. reticulata* is recommended for very mild areas or glass house culture only. The hybrids, because they are hybrids, will vary from variety to variety as to the cold each will stand. Some of them have gone through temperatures of zero with little ill effect.

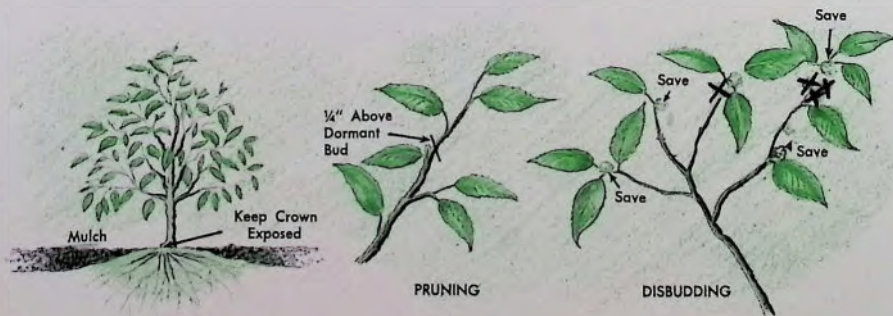
#### PRUNING

Prune young plants for shape only. Just prior to the growth period is the best time. Do not prune back more than one-third of the plant. Large, old plants need a heavy pruning about every other year. This will promote strong new branches that will support a better quality flower. All dead wood should be removed each year. Pruning for a desired shape is easily accomplished with camellias, but letting your nurseryman help you select a variety best adapted to the desired shape will make the job easier.

The "Chandleri" varieties should not have the main stem or trunk cut until they reach the desired height as they have a very difficult time developing a new leader.

#### DISBUDDING

Disbudding of camellias should start as early as you are able to distinguish between flower buds and growth buds. With the majority of varieties this would be as early as October. Limit disbudding to only those varieties that produce large, full blossoms or the types that have a tendency to cluster as many as 10 to 15 buds on a tip (Lotus). The sasanquas and many of the mass blooming japonicas, such as Berenice Boddy, Magnoliaflora and My Darling need not be disbudded, as their real beauty is in their heavy, mass blooms.





*Camellia japonica* 'ANGEL'



*Camellia japonica* 'CARTER'S SUNBURST'

*Finest  
of*



*Camellia japonica* KRAMER'S SUPREME







*Camellia japonica* 'CINDERELLA'



*Camellia japonica* 'KING'S RANSOM'

## NEW AND RECENT INTRODUCTIONS

**AARON'S RUBY**—A large to very large metallic red, semi-double to anemone form with petals intermixed with trumpet-shaped petaloids surrounding mass of golden stamens. Vigorous, slender, upright growth. E-L. 12-18" \$6.00\*; 18-24" \$7.50\*; 24-30" \$10.00\*; 30-36" \$12.50\*

**ADA PIEPER**—A beautiful coral rose, large, rabbit-eared, semi-double. Vigorous, compact growth. M. 12-18" \$6.00\*; 18-24" \$7.50\*

**ALICE WOOD**—This lovely new Camellia was raised from seed by Mrs. Alice Wood, San Gabriel, Calif., and named in her memory. Its early bloom, starting in November, makes this large, bright red, formal double a must in every collection. Vigorous, upright growth with beautiful dark green foliage. E-M. 12-18" \$7.50\*

**ANGEL**—A very large white semi-double with fluted petals and rabbit ears. Compact, upright growth. M. (Seedling developed by Councilman Camellia Acres) 12-18" \$6.00\*; 18-24" \$7.50\*; 24-30" \$10.00

**AVA MARIA**—A very beautiful silvery pink formal double that blooms from Oct. through March. Medium large. Upright, compact. E-M. (Seedling developed by Mr. C. Breschini.) 12-18" \$5.00\*; 18-24" \$7.50\*; 24-30" \$10.00\*

**BALI HAI**—Very large white semi-double, with many ruffled and high-winged petals surrounding an unusual center of stamens and petaloids. Bushy, upright growth. M. 12-15" \$12.50

**BARBARA WOODROOF**—Sport of Chandleri. Light orchid pink outer guard petals with cream white center petaloids. Outstanding. M. 12-18" \$5.00\*; 18-24" \$7.50\*; 24-30" \$10.00\*

**BETTY ROBINSON**—New. Dark red. Large, peony to anemone form with upright center petals and large cluster of stamens. Vigorous, compact, upright growth. M. 12-18" \$6.00\*; 18-24" \$7.50\*; 24-30" \$10.00\*

**BETTY SHEFFIELD BLUSH**—Blush pink bordered white sport of Betty Sheffield. Medium, compact growth. Outstanding. M. 12-18" \$7.50\*; 18-24" \$10.00\*

**BETTY SHEFFIELD SUPREME**—This beautiful sport of Betty Sheffield, white with each petal distinctly bordered rose to rose red, is the camellia world's first true picotee camellia. One of the most sought after varieties today. M. 12-18" \$7.50\*

**BILLIE McCASKILL**—(Margarete Hertrich Award 1957.) Medium size, deeply fimbriated, semi-double. Beautifully shaded soft pink. Profuse bloomer. Compact, upright growth. M-L. 12-18" \$6.00\*; 18-24" \$7.50\*

**BRYAN WRIGHT**—Light pink, medium, semi-double to peony form, with loose petals interspersed with stamens. Medium, compact, upright growth. M. 24-30" \$7.50\*

**CARDINAL**—(Seedling by Mr. Carter.) A 4-5" rich, dark red. Full peony of outstanding texture. Vigorous, upright growth with handsome, dark green foliage. 12-18" \$6.00\*; 18-24" \$7.50\*; 24-30" \$10\*

**CARDINAL'S CAP**—A fine new boutonniere type camellia. This beautiful small flower, 2-2½", is cardinal red, full anemone, with 5 guard petals. Very unusual and excellent for cutting. Medium, bushy, upright growth. Developed by Surina's Camellia Gardens. M-L. 12-18" \$7.50



# FINEST OF NEW AND RECENT

- CARTER'S SUNBURST**—Best of the new variegated Camellias. Very large rose form to semi-double. White with pale pink and rose markings. Vigorous upright growth. M-L. 12-18" \$6.00\*; 18-24" \$7.50\*; 24-30" \$10.00\*; 30-36" \$12.50\*
- CECILE BRUNAZZI**—Beautiful light pink, large semi-double to peony form with large outer petals and upright center petals interspersed with stamens. M. 12-18" \$6.00\*; 18-24" \$10.00\*
- CINDERELLA** (Plant Patent No. 1281)—Winner of the 1956 All-America Camellia Selections. Beautiful pale pink, bordered white sport of Fred Sander. Fimbriated edges. 12-18" \$5.00; 18-24" \$7.50\*; 24-30" \$10.00\*
- CLARISE CARLTON**—Beautiful, large, irregular, semi-double. Brilliant coral-red. M. 12-18" \$6.00\*; 18-24" \$7.50\*; 24-30" \$10.00\*
- COLONIAL DAME**—A very fine, beautiful large white, semi-double to peony form. Upright, compact growth. M. 12-18" \$6.00\*; 24-30" \$10.00\*
- CONQUISTADOR** (N #5527)—A beautiful large coral rose, semi-double with fluted petals intermixed with golden stamens. Vigorous, upright, compact growth. M-L. 12-18" \$7.50\*
- CORAL PINK LOTUS**—A very large, semi-double coral-pink with deeper pink veins. Vigorous, open, upright growth. M. 12-18" \$6.00\*; 18-24" \$7.50\*; 24-30" \$10.00\*
- COUNTRY DOCTOR**—Deep rich pink with deeper pink veins. Very large, semi-double with creped petals and curled upright inner petals. Vigorous, upright growth. E-M. 12-18" \$7.50\*
- DEAR JENNY**—A very large, white semi-double that is rapidly taking its place as one of the best. Vigorous, compact growth. E-M. 12-18" \$7.50\*
- DESTINY**—Having all the fine qualities of its parent, this sport of Lady Clare will soon become a favorite. Blush pink variegated deep pink. E-M. 12-18" \$6.00\*
- DORIS FREEMAN**—Large semi-double to peony form. Pink marbled and blotched white. Compact, upright growth. M. 24-30" \$10.00\*
- DRAMA GIRL VAR.**—Mottled white variegated form of Drama Girl. Outstanding. E-M. 12-18" \$7.50\*
- ECCLEFIELD**—A very large, high built, semi-double to full peony. Chalky white. Extremely heavy textured. Vigorous, upright growth. E-M. 12-18" \$7.50\*
- EDELWEISS**—Large white peony to semi-double. Long blooming season. Vigorous, upright growth. Outstanding. E-M. (Seedling developed by Mr. C. Breschini.) 12-18" \$5.00\*
- EMILY WILSON**—A beautiful pale pink, large, semi-double to incomplete double. Vigorous, upright growth. M. 18-24" \$7.50\*; 24-30" \$10.00\*
- GEISHA GIRL**—A very large semi-double variegated, pale pink, with speckles of orchid pink and deep pink stripes. Vigorous, upright growth. M. 12-18" \$7.50\*
- GEN. LECLERC**—Large semi-double to peony form with irregular petals. Dark red. Medium, upright, compact growth. M. 12-18" \$7.50\*
- GUILIO NUCCIO** (Margaret Hertrich Award 1956) (John Illges Award 1958)—A 5 to 6-inch semi-double of unusual beauty. Coral rose, with 12 to 15 wavy petals and 3 to 5 large rabbit ears. Heavy texture. Foliage large, dark green with vigorous, bushy growth. E-M. 12-18" \$5.00\*; 18-24" \$7.50\*; 24-30" \$10.00\*
- GUILIO NUCCIO VAR.**—A beautiful blotched white variegated form of Giulio Nuccio. 12-18" \$7.50\*
- HAZEL HERRIN**—Very large semi-double with loose, wide petals and large petaloids. Old rose. Medium, open growth. M. 12-18" \$5.00\*
- HAWAII**—This beautiful sport of C. M. Wilson, named for our 50th State, was developed by Hamilton and Clark Nurseries. The peony shaped, pale pink flowers are often over 6 inches across. The petals have a delicate lighter pink margin which are fimbriated, giving the flower an oriental look—much like the Chinese peony. The blooms have exceptional lasting qualities, both on and off the bush. Growth habit and foliage are identical to the parent plant. 12-18" \$10.00\*; 18-24" \$12.50\*; 24-30" \$15.00\*; 30-36" \$20.00\*
- HIGH WIDE 'N HANDSOME**—A truly high, wide and handsome camellia. Very large, warm pink, semi-double. Vigorous, bushy, upright growth. M. 12-18" \$7.50\*; 18-24" \$10.00\*
- JACK McCASKILL** (Wm. Hertrich Award 1953-54.) Unusual colored sport of Te Deum. Antique rose-pink shaded burgundy and edged white. L. 12-18" \$7.50\*
- JINGLE BELLS**—A small 2½-3" anemone type flower. Red sport of Tinker Bell. Vigorous, upright growth. E-M. 12-18" \$5.00\*
- KATE THRASH**—Rose-pink, medium large, peony form with mixed petals and petaloids of full form. Vigorous, open growth. E-M. 12-18" \$6.00\*; 18-24" \$7.50\*
- KING'S RANSOM** (Pl. Pat. No. 1800)—A very beautiful 4½" loose peony, pale pink, that blooms heavily from mid-season to late. Strong, bushy, upright grower. A proven fine performer. M-L. 1961 All-America Camellia Selection Winner. 12-18" \$7.50\*; 18-24" \$10.00\*; 24-30" \$12.50\*; 30-36" \$15.00\*



# INTRODUCTIONS

**KRAMER'S SUPREME**—(Pl. Pat. No. 1583.) An outstanding new camellia. Very large, rich red, full peony. Vigorous, upright growth. M-L. 12-18" \$3.50; 18-24" \$4.00; 24-30" \$7.50; 30-36" \$10.00

**LADY IN RED** (Margaret Hertrich Award 1960) — Very large, brilliant red, semi-double with waxy sheen on petals. Vigorous, compact, upright growth. M. 12-18" \$7.50\*; 18-24" \$10.00\*

**LADY MACON**—A very large, vivid pink anemone form. Vigorous, beautiful growth. Outstanding. M-L. 12-18" \$7.50\*

**LAURA WALKER**—Bright red large semi-double to loose anemone form. Vigorous, compact, upright growth. E-M. 12-18" \$6.00\*; 18-24" \$7.50\*; 24-30" \$10.00\*

**LOOK AWAY**—Sport of Herme. Deep rose-pink in throat with wide border of white. Excellent. 12-18" \$6.00\*

**LUCY HESTER**—A fine new seedling of Lotus developed by Mr. and Mrs. K. O. Hester. Large to very large silvery pink, semi-double with handsome foliage. Strong, upright growth. 12-18" \$6.00; 18-24" \$7.50\*; 24-30" \$10.00\*

**MARIE BRACY**—An early bloomer that is here to stay. Beautiful rose-pink, large, irregular, semi-double to peony form. Bushy, upright growth. E-M. 12-18" \$7.50\*

**MARY ANN HOUSER VAR.** — A very large rose-pink variegated white, irregular semi-double. Choice. Medium, compact, upright growth. M. 12-18" \$6.00\*

**MARY WHEELER**—Light pink to white at base of petals. Large, loose peony form with petals interspersed with stamens. Medium, upright growth. M. 12-18" \$7.50\*

**MAY INGRAM** (N #526) — Outstanding, early blooming, orchid pink formal double. Always in full bloom for the Christmas season. Excellent corsage flower. Vigorous, upright growth. E-L. 12-18" \$3.50; 18-24" \$5.00; 24-30" \$7.50\*

**MERCURY**—Deep rose-pink to scarlet. Large, flat, semi-double with upright center petals. Medium, compact growth. M. 12-18" \$7.50\*

**MIRIAM STEVENSON** — Large semi-double to peony form with petaloids and stamens intermixed. Medium, upright growth. M. 24-30" \$7.50\*

**MISS ANAHEIM**—Large semi-double, delicate soft pink, with many notched, fluted petals. Bushy, upright, with dark green glossy foliage. M. 12-18" \$7.50; 18-24" \$10.00

**MISS FRANKIE** (N #515) — A large, semi-double, clear salmon-pink with large petals and golden yellow stamens. Outstanding. Vigorous, upright growth. M. 12-18" \$5.00

**MISS UNIVERSE** (P.A.F.)—This creamy white camellia produces formal, semi-double and anemone type flowers. Long, narrow foliage and vigorous, bushy growth. A fine, late blooming variety. L. 12-18" \$4.00; 18-24" \$5.00; 24-30" \$10.00; 30-36" \$12.50

**MOONLIGHT SONATA**—A beautiful new seedling developed by Surina Camellia Gardens. Lovely, soft, light pink. 5-5½" semi-double to loose peony form with loose, upright center petals intermingled with yellow stamens. Excellent texture. Fine, bushy, upright growth. M-L. 12-18" \$7.50\*

**MRS. D. W. DAVIS** — (Illges Medal Award 1955.) Very large semi-double, blush pink. Vigorous upright growth with strong, dark green foliage. M. 12-18" \$6.00\*; 18-24" \$7.50\*; 24-30" \$12.50

**MRS. GOODWIN KNIGHT** — Lovely deep orchid pink. Large, loose-peony form. Vigorous, upright growth. Extremely early. E-M. 12-18" \$6.00\*

**O. C. COTTON** — A very large, dark velvet-red, semi-double with very large petals and large crown of pink stamens and yellow anthers. M. 12-18" \$7.50\*

**ONETIA HOLLAND** — Large to very large white semi-double to peony with tiers of outer petals surrounding 3" high petaloids interspersed with golden stamens. Vigorous, upright growth. M. 12-18" \$6.00\*; 18-24" \$7.50\*; 24-30" \$10.00\*

**PAULINE WINCHESTER** — A very large rabbit-eared, semi-double to loose peony, white, marked pale orchid-pink. Vigorous, upright growth. M-L. 12-18" \$5.00\*

**PENSACOLA RED**—Very large, peony to anemone form with two rows of outer guard petals surrounding clusters of petaloids and large center of red stamens. Dark red. Vigorous, open, upright growth. M. 12-18" \$7.50\*

**PETER PAN**—White at base of petals to blush pink to deep pink at edges. Medium, loose peony form. Medium, compact growth. M-L. 12-18" \$6.00\*

**PRELUDE**—Rich turkey-red. Large, semi-double to anemone form with twisted inner petals. Vigorous, upright growth. E-M. 12-18" \$7.50\*

**RICHARD NIXON** — Beautiful white, shaded pink and striped rose-pink. Large anemone form with outer row of upright, crinkled petals. Upright, bushy growth. E-L. 12-18" \$6.00\*

**SADIE MANCILL**—Pale pink striped and spotted rose. Very large, semi-double to peony form. Vigorous, upright, open growth. M. 12-18" \$7.50\*

**SALLY HARRELL**—Large white, full peony form of the Debutante type. Compact, upright growth. E-M. 12-18" \$3.50; 18-24" \$7.50\*; 24-30" \$10.00\*

**SAWADA'S DREAM**—New and outstanding. Full double, imbricated, medium size blooms. Pure white with outer third of the petals shaded very delicate flesh pink. Excellent cut flower. Medium, bushy, upright growth. E-M. 12-18" \$7.50\*

(Continued on page 14)



# Nuccio's

## SPECIAL QUALITY CAMELLIA COLLECTIONS



*Camellia japonica* 'GUILIO NUCCIO'

### BLUE RIBBON COLLECTION

Ten of the leading newer varieties, cutting grown. These are strong, bushy, 12-18" plants.

ANGEL

CORAL PINK LOTUS

DRAMA GIRL

GUILIO NUCCIO

MATHOTIANA SUPREME

MRS. D. W. DAVIS

REG RAGLAND

SPRING SONNET

TOMORROW

WILDWOOD

\$3 each. Any 5 for \$13.75. All 10 varieties, \$22.50

### GREAT FAVORITES COLLECTION

ADOLPHE AUDUSSON VAR.

DEBUTANTE

HERME

FINLANDIA

ALBA PLENA

DAIKAGURA VAR.

BLOOD OF CHINA

POPE PIUS IX

12-18", bushy. All 8 for \$13.75

(Catalogue value \$16.50)

## SPECIAL BONUS OFFER

When our customers send us a nice order we like to show our appreciation by shipping extra camellias. But so many times we are uncertain what to send because the variety we select may be one already a part of your collection. So we are making this special bonus offer in order to give you an opportunity to select the extra plants yourself. There are no restrictions on varieties — you may choose any kind in this catalog according to the following schedule:

If your order amounts to **\$20.00** or more, select any \$2.50 camellia free of additional charge.

If your order amounts to **\$40.00** or more, select any camellias totaling \$5.00 in value.

If your order amounts to **\$60.00** or more, select any camellias totaling \$7.50 in value.

If your order amounts to **\$80.00** or more, select any camellias totaling \$10.00 in value.

**Larger orders earn bonus plants according to the same ratio**





Camellia japonica 'CARA MIA'

Camellia sasanqua 'DAZZLER'

## RETICULATA "BIG FOUR" SPECIAL

BUDDHA  
LION'S HEAD  
CRIMSON ROBE  
NOBLE PEARL

12-18" grafts

All 4 for

**\$27.50**

(Catalogue value \$32.50)



Camellia japonica 'MISS UNIVERSE'

Camellia japonica 'HAWAII'

## GOLD MEDAL COLLECTION

BALLET DANCER  
SILVER ANNIVERSARY  
GIULIO NUCCIO VAR.  
CARTER'S SUNBURST

12-18" grafts

All 4 for

**\$23.50**

(Catalogue value \$28.50)





## NEW AND RECENT INTRODUCTIONS—Continued

**SOUTHERN CHARM**—A very large, white, semi-double with fine style and texture. Medium, upright growth. 12-18" \$6.00\*; 24-30" \$10.00\*

**STELLA SEWELL**—Creamy white, very large semi-double to peony form. Medium, compact growth. M. 12-18" \$6.00\*

**SULTANA**—Early blooming sport of Mathotiana. Scarlet, semi-double to peony form. E-M. 12-18" \$6.00\*; 18-24" \$7.50\*; 24-30" \$10.00\*

**SWEETHEART** (Pl. Pat. No. 1562.)—The All-America Camellia Selections Winner for 1959. A beautiful soft pink formal double, occasionally marbled white sport of Casablanca. Fine corsage flower. Outstanding on West Coast and areas where Bleichroeder and Casablanca perform. Vigorous, bushy, upright growth. E-M. 12-18" \$3.50; 18-24" \$4.00; 24-30" \$7.50; 30-36" \$10.00

**TICK TOCK**—Large, peony form with mixed petals and petaloids of full form. White, striped and flecked brilliant red. Vigorous, upright growth. E-M. 12-18" \$6.00\*

**TINKER BELL** (N #546)—A small, 2½ to 3" anemone type flower. White with pink and rose-red stripes. Profuse and long blooming. November through March. Vigorous, upright growth. E-M. 12-18" \$5.00\*

**TOMORROW**—A large, brilliant red, irregular semi-double with large petaloids. Vigorous, upright growth. E-M. 12-18" \$6.00\*; 18-24" \$7.50\*; 24-30" \$10.00\*

**TOMORROW VAR.**—A beautiful red, mottled white variegated form of Tomorrow. E-M. 12-18" \$7.50\*; 24-30" \$10.00\*

**TOMORROW'S DAWN**—Beautiful new sport of Tomorrow. Light pink, bordered white. Vigorous, upright growth. 12-18" \$10.00\*

**VIRGINIA ROBINSON** (N #5461)—Beautiful large, semi-double, clear orchid-pink. Large foliage, vigorous, upright, compact growth. M-L. 12-18" \$3.50; 18-24" \$5.00; 24-30" \$7.50

**VULCAN**—A brilliant new red. Large rose form to semi-double. Vigorous, upright growth. M. 12-18" \$7.50\*

**WHEEL OF FORTUNE**—Very large semi-double to anemone white with many stripes of bright coral-rose. Vigorous, upright. M. 12-18" \$7.50; 18-24" \$10.00

**WHITE NUN**—A fine new white. Very large semi-double. Vigorous, upright growth. M. 12-18" \$7.50\*; 18-24" \$10.00\*

**WINTER MORN**—A very large white semi-double to anemone form of outstanding texture. Extremely hardy in cold sections. Handsome, large foliage. Vigorous, upright growth. M. 12-18" \$6.00\*; 18-24" \$7.50\*; 24-30" \$10.00\*

# SUPREME

**ADOLPHE AUDUSSON VAR.** (Special) — Heavily mottled white form of Adolphe Audusson. M. 12-18" \$4.00\*; 18-24" \$5.00\*; 24-30" \$7.50; 30-36" \$10.00\*

**ANN MILLER**—Large, semi-double to double, pale pink. Vigorous, compact growth. M-L. 12-18" \$5.00\*; 18-24" \$6.00\*; 24-30" \$7.50\*

**BEAU HARP**—Very large, irregular semi-double, brilliant rose-red. Vigorous, upright growth. E-M. 12-18" \$4.00\*; 18-24" \$5.00\*; 24-30" \$7.50\*

**BERENICE BODDY** (U.S. Pat. No. 605)—Light pink with deeper pink under petals, shading to a blush center. Medium-large, semi-double. Vigorous, loose growth. M. 12-18" \$2.50; 24-30" \$7.50

**BETTY McCASKILL** (Maliflora)—Small semi-double to full double pale pink, margined rose-pink. Vigorous, slender, upright growth with small foliage. M-L. 12-18" \$5.00\*

**BETTY SHEFFIELD**—Large white, variegated red and pink, semi-double to loose peony form. Medium, compact growth. M. 12-18" \$6.00\*

**BIG BEAUTY**—White, blotched and spotted with pink. Large, semi-double to loose peony form. Vigorous, bushy growth. M-L. 12-18" \$2.50

**CAROLYN TUTTLE**—New. Rose-opal, full peony flower similar to Debutante in form, but deeper in color. Sturdy, long-lasting blooms ranging in size from 3½ to 4 inches and larger. Glossy, crinkled, pointed foliage; sturdy, compact, upright plants. M. 12-18" \$2.50; 18-24" \$3.50; 24-30" \$7.50; 30-36" \$10.00

**CHARLOTTE BRADFORD**—A beautiful silvery pink, variegated white sport of Thelma Dale. M. 12-18" \$5.00\*

**CLARA GREEN**—A very lovely, large anemone form. Brilliant rose-pink. Upright, compact growth. M. 12-18" \$2.50

**C. M. WILSON**—Pale pink sport of Chandleri Elegans. Outstanding. Medium spreading growth. E-M. 12-18" \$2.50; 18-24" \$3.50; 24-30" \$7.50; 30-36" \$10.00

**CONRAD HILTON**—Another wonderful addition to the already famous "Daik" family is this new eggshell white sport of High Hat. Extremely early. Slow, compact growth. E-L. 12-18" \$5.00; 18-24" \$6.00\*; 24-30" \$7.50\*; 30-36" \$10.00\*

**CORONATION**—White. Very large semi-double with beautiful crown of stamens and petaloids. Vigorous, open, spreading growth. M. 12-18" \$6.00\*; 18-24" \$7.50\*; 24-30" \$10.00\*



# QUALITY Camellias

**DONCKELARI**—Same as Donckelari (Southern) with the exception that our parent plant blooms heavily marbled white. M. 12-18" \$2.50; 18-24" \$3.50; 24-30" \$7.50

**DR. JOHN D. BELL**—Dark red, heavily variegated white form of Beau Harp. Vigorous. Upright growth. E-M. 12-18" \$5.00\*

**DR. TINSLEY**—New. Large, flesh pink, semi-double to peony. Outstanding. Upright, compact growth. M. 12-18" \$5.00\*; 18-24" \$7.50\*; 24-30" \$10.00\*

**DRAMA GIRL**—Its very large blossoms, 5½-6½", are large petaled, semi-double, deep salmon rose pink with prominent stamens. Vigorous, upright open growth, with extremely large, dark green foliage. Blooming season from December through April. 12-18" \$3.50; 18-24" \$5.00\*; 24-30" \$10.00\*

**EDWIN FOLK**—Bright red. Very large, loose semi-double. Medium, upright growth. M-L. 12-18" \$2.50; 18-24" \$3.50; 24-30" \$7.50

**ELEANOR HAGOOD**—Pale pink. Medium, formal very double. Vigorous, upright, bushy growth. L. 12-18" \$2.50; 18-24" \$3.50

**ELIZABETH LE BEY**—This outstanding new camellia is a must in every collection. The rich pink blossoms are very large, hemispherical, semi-double to loose peony form. Vigorous, pendulous growth. 12-18" \$5.00\*

**EMMETT BARNES**—Finest of the whites. Very large semi-double to loose peony form. Vigorous, compact growth with large, dark green foliage. E. 12-18" \$5.00\*; 18-24" \$7.50\*

**EMMETT PFINGSTL**—Beautiful red and white variegated form of Joseph Pfingstl. An excellent camellia. Vigorous, upright growth. E-M. 12-18" \$5.00

**FIRCONE VAR.**—Beautiful, blood-red, mottled white miniature. Semi-double, similar to a fircone. Vigorous, bushy growth. M-L. 12-18" \$5.00\*

**FLOWERWOOD** (U.S. Pat. No. 1074)—Flower form and color identical to a Mathotiana but all petals are sharply fimbriated. Outstanding. Vigorous, bushy growth. M-L. 12-18" \$2.50; 18-24" \$3.50; 24-30" \$7.50\*; 30-36" \$10.00\*

**FRANCES McLANAHAN**—Soft pink sport of Lady Vansittart with lighter pink toward center of petals. Vigorous, upright, compact. Excellent. M. 12-18" \$2.50; 24-30" \$7.50

**GLEN 40**—Deep orange-red. Large, full formal double. Slow, compact growth. M-L. 12-18" \$2.50; 18-24" \$3.50; 24-30" \$7.50; 30-36" \$10.00

**GLEN 40 VAR.**—Deep orange-red, mottled with white. Slow, compact growth. M-L. 12-18" \$4.00\*

**GRACE BUNTON**—Deep rose pink edge to white at center. Large semi-double to peony form. Bushy compact growth. M. 12-18" \$4.00\*; 18-24" \$5.00\*

**HANA FUKI**—Light pink. Very large cup shaped, semi-double. Medium, compact growth. M. 12-18" \$2.50

**HELEN K**—Medium to large peony form, with unusual color toning of pale pink center to deeper lavender pink toward edges. Vigorous, compact growth. E-M. 12-18" \$5.00\*; 18-24" \$6.00\*; 24-30" \$7.50\*

**HISHI-KARAITO**—Small, bell-shaped, semi-double. Delicate pink. Slow, compact growth. M. 12-18" \$5.00\*

**IWANE** (F. G. #2)—Brilliant red, heavily blotched with white. Large semi-double. Slow, compact growth. M. 12-18" \$5.00\*; 24-30" \$10.00\*

**JAMES ALLAN**—Fire-red. Very large, semi-double, medium growth. M. 12-18" \$2.50; 18-24" \$3.50

**J. J. PRINGLE SMITH VAR.**—Dark red, heavily marbled with white. Very large, semi-double. Slow, compact growth. M-L. 12-18" \$2.50

**JESSIE KATZ** (U.S. Pat. No. 1107)—An outstanding new variety with large, wavy petals. Semi-double, watermelon pink. We are the exclusive West Coast propagators of this fine new camellia. Medium, bushy growth. M-L. 24-30" \$10.00\*; 30-36" \$12.50\*

**JOSEPH PFINGSTL** (Pat. No. 927)—A very large, dark red, varying in form from semi-double to full formal. Extremely hardy and vigorous growth with long blooming season. October to April. E-L. 12-18" \$5.00\*

**JOSHUA A. YOUTZ** (White Daikagura)—This outstanding camellia was introduced by our nursery in 1950. Its blossoms, which are pure white, fully peony form double, are larger than its parent, the Daikagura. Its foliage, growing habit and early blooms are like its parent, making this variety a truly outstanding camellia. E-L. 12-18" \$2.50; 18-24" \$3.50; 24-30" \$7.50; 30-36" \$10.00\*

**KATHERINE NUCCIO** (N #104)—A 3 to 3½-inch double formal, rose form, consisting of 60-65 large petals. Brilliant rose-red, with edges of petals cupped inward. Foliage, dark green, medium, slightly twisted. Compact growth. 12-18" \$2.50; 18-24" \$3.50; 24-30" \$7.50; 30-36" \$10.00

(Continued on page 17)





Camellia japonica 'MAGNOLIAEFLORA'



Camellia japonica 'DOCTOR TINSLEY'



Camellia japonica 'GLEN 40'

Muccio's

SUPREME  
QUALITY  
CAMELLIAS

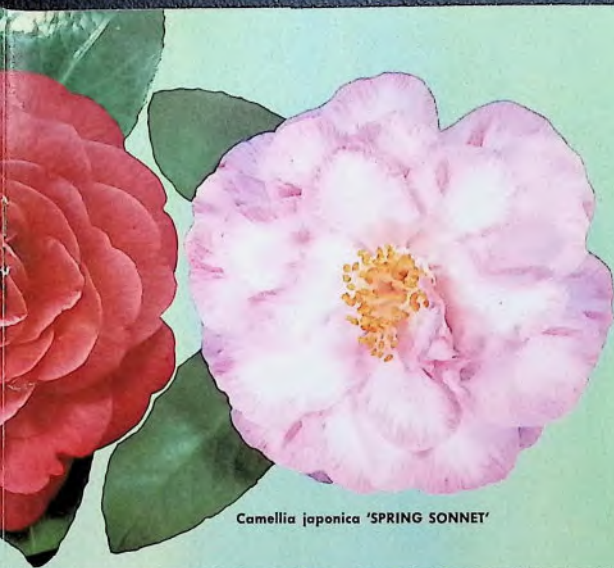
16

Camellia japonica 'JOSHUA YOUTZ'

Camellia japonica 'ADOLPHE AUDUSSON VAR.'







*Camellia japonica* 'SPRING SONNET'



*Camellia japonica* 'TOMORROW'

**KERLEREC**—A very beautiful salmon-pink, medium-large peony to anemone form. Medium, bushy, upright growth. E-M. 18-24" \$7.50\*; 24-30" \$10.00\*

**KITTY**—Very beautiful, small, formal double white with tipped pink border. M-L. 12-18" \$5.00\*

**KURO TSUBAKI**—One of the most unusual of all camellias in this black-red with dark red stamens. Small, semi-double. Medium, upright, compact growth. M-L. 12-18" \$5.00\*

**LADY KAY**—Fimbriated peony form sport of Ville de Nantes, with growing and blooming season same as parent. Red, mottle white. 12-18" \$5.00\*; 18-24" \$7.50\*; 24-30" \$10.00\*

**MAGNOLIAEFLORE**—Still one of the best of the pale pink semi-doubles. Its very compact, upright growth makes it a handsome shrub. M. 12-18" \$2.50; 18-24" \$3.50; 24-30" \$7.50; 30-36" \$10.00

**MARGARET RADCLIFF**—Medium to large, pale pink, semi-double to peony, shading to deeper pink on edges. M. 12-18" \$5.00\*

(Continued on next page)

*Camellia japonica* 'ELEGANS CHANDLERI VAR.'



*Camellia japonica* 'BERENICE' BODDY'





## SUPREME QUALITY CAMELLIAS—Continued

**MARIE GRIFFIN**—Beautiful blush pink sport of Finlandia. Much lighter than the Finlandia sport, Monte Carlo. Medium, bushy, compact. M. 12-18" \$2.50; 18-24" \$3.50; 24-30" \$7.50; 30-36" \$10.00

**MARJORIE MAGNIFICENT**—Pale pink, semi-double to peony form. Medium, compact growth. E-M. 12-18" \$2.50; 18-24" \$3.50

**MATHOTIANA SUPREME**—This sport of Mathotiana is the same color and has the same growing habits as its parent, but its large, semi-double blossoms has stamens interspersed among curled or ruffled center petals. 12-18" \$6.00\*; 18-24" \$7.50\*; 24-30" \$10.00\*

**MATTIE O'REILLY**—Very large, semi-double to peony form with stamens intermixed with rabbit-eared petals. Beautiful shade of coral rose pink. Slow, compact, upright growth. E-M. 12-18" \$5.00\*; 18-24" \$7.50\*; 24-30" \$10.00\*

**MAX GOODLEY**—Very large, pale pink, irregular semi-double. Vigorous, open, upright growth. M-L. 12-18" \$2.50

**MELODY LANE**—Very large semi-double. Blushed pink striped red. Medium compact growth. Profuse bloomer. M. 12-18" \$5.00\*; 18-24" \$7.50\*

**MOLLIE MOORE DAVIS**—A very beautiful, large, deep rose-pink sport of Big Beauty. Outstanding. Vigorous, bushy growth. M-L. 12-18" \$2.50

**MONTE CARLO**—Beautiful light pink sport of Finlandia. Outstanding. M. 12-18" \$2.50; 18-24" \$3.50; 24-30" \$7.50; 30-36" \$10.00

**MRS. BERTHA HARMS**—A very large semi-double. Ivory white with blush pink cast. Medium, upright, open growth. M-L. 12-18" \$5.00\*

**MRS. CLARK**—A very beautiful light pink to white, large peony. Medium, compact growth. M. 18-24" \$6.00\*; 24-30" \$7.50\*

**MRS. FREEMAN WEISS**—Pink, occasionally mottled with white. Large, semi-double with wavy petals. Vigorous, upright, compact. M. 12-18" \$2.50; 18-24" \$3.50; 24-30" \$7.50

**MRS. NELLIE EASTMAN**—Flesh pink, speckled and striped with deep rose. Medium large, full peony form. Very beautiful. Medium, upright, compact. M. 12-18" \$5.00\*

**MY DARLING**—Beautiful, small soft pink. Single. Resembles a poppy. Vigorous, upright, compact. M. 12-18" \$2.50; 18-24" \$3.50

**NINA AVERY**—New. Pale pink. Medium to large; semi-double to peony form. Vigorous, upright, compact. M. 18-24" \$4.00; 24-30" \$7.50\*

**ONJI**—Deep pink marbled with white. Very large semi-double. Variegated form of Lady Clare. Vigorous, bushy growth. E-M. 12-18" \$2.50\*; 18-24" \$3.50\*; 24-30" \$7.50\*

**PAULETTE GODDARD**—Red. Very large, semi-double to loose peony form. Vigorous, upright, open growth. M-L. 12-18" \$4.00\*; 18-24" \$5.00\*; 24-30" \$7.50

**PEARL MAXWELL**—A beautiful, large formal double. Soft pink. A glorified Pink Perfection. Vigorous, compact growth. M-L. 12-18" \$2.50

**PINK CHAMPAGNE**—A large, light pink, full peony. Vigorous, upright. M-L. 12-18" \$6.00\*

**PRIDE OF DESCANSO**—White. Very large, semi-double to loose peony form. Vigorous, loose, spreading growth. M-L. 12-18" \$2.50

**PRIMAVERA (N #105)**—A 3½-4-inch full double formal, with a high center, consisting of 55-60 petals. Pure white. Some blossoms show a small petaloid center when fully opened. L. 12-18" \$2.50; 18-24" \$3.50

**PRINCE OF ORANGE (Crusader)**—Deep red. Very large semi-peony form to rose form double. Vigorous, compact growth. M. 12-18" \$2.50; 18-24" \$3.50

**PRINCESS LAVENDER**—Unusual shade of lavender pink. Large, semi-double. Medium, upright growth. E-M. 12-18" \$6.00\*

**REG RAGLAND** (Margaret Hertrich Award 1954 and John Illge Award Winner 1956)—A very large red to red and white full semi-double with smaller upright center, petals. Vigorous, compact, upright growth. M-L. 12-18" \$7.50\*; 18-24" \$10.00\*

**R. L. WHEELER** (U.S. Pat. No. 1137)—A great new camellia that has won more awards than any other. A very large, semi-double to full peony; rose-red with extremely large foliage. (Propagating rights obtained from Central Georgia Nurseries.) E-M. 12-18" \$5.00\*; 18-24" \$7.50\*

**ROSEMARY KINZER**—Light pink. Large semi-double to irregular double. M. 12-18" \$2.50; 18-24" \$3.50



## SUPREME QUALITY CAMELLIAS—Continued

**SHIRO CHAN**—This beautiful white sport of C. M. Wilson shows an occasional blush pink at the base of the petaloids. Same habit of growth and blooming season as its parent. 12-18" \$2.50; 18-24" \$3.50; 24-30" \$7.50; 30-36" \$10.00

**S. PETER NYCE**—A beautiful predominantly white sport of Nagasaki. Winner of Best Flower Award in Southern California Camellia Society Show 1952. Slow, spreading, bushy growth. M. 12-18" \$5.00

**SPRING SONNET**—New. Outstanding pale pink sport of Herme. Growth and blooming season same as parent. 12-18" \$5.00; 18-24" \$6.00; 24-30" \$7.50\*

**SWEETI VERA**—Flesh pink, mottled white with deeper pink speckles. Large, peony form. Vigorous, spreading growth. M. 12-18" \$2.50

**TE DEUM** (Dr. Shepherd)—Dark red. Very large, from semi-double to full peony to formal double. Medium, open growth. M-L. 12-18" \$4.00; 18-24" \$5.00; 24-30" \$7.50\*

**THELMA DALE**—Silvery-pink. Large, semi-double to rose form double. (Sport of Mrs. Baldwin Wood.) M. 12-18" \$2.50; 18-24" \$3.50

**THOMAS D. PITTS** (N #144)—A new white formal double that we are proud to offer. This camellia, along with its full white blossoms, has beautiful, deep green foliage, and vigorous, bushy, upright growth. Blooms heavily from midseason to late. 12-18" \$2.50; 18-24" \$3.50; 24-30" \$7.50

**TINSIE**—Bright red outer guard petals with white peony center. Vigorous, open, upright growth. M. 12-18" \$5.00\*

**TOKI-NO-HAGASANE** (Bessie Morse Bellingrath)—White with faint blush of pink. Large, semi-double. Extremely slow, compact growth. L. 12-18" \$2.50

**VILLE DE NANTES VAR.**—Dark red, blotched with white. Large, irregular semi-double with edges of petals fimbriated. Slow, bushy growth. M. 12-18" \$2.50; 18-24" \$5.00; 24-30" \$7.50; 30-36" \$10.00

**WILDWOOD**—Very large, light orchid pink, semi-double to peony form with heavy veining. Upright, compact growth. M-L. 12-18" \$5.00; 18-24" \$7.50; 24-30" \$10.00\*

## HYBRID Camellias

**BLUE DANUBE**—This three-quarter japonica, one-quarter saluenensis cross bears an abundance of medium-large, rosy-lavender, peony form flowers of excellent texture. Beautiful foliage and bushy growth. M. 12-18" \$7.50; 18-24" \$10.00\*

**BONNIE MARIE** (Pl. Pat. No. 1801)—A saluenensis hybrid with a 4½" to 5" pale orchid pink flower that is fluted semi-double to anemone form. Vigorous, upright growth. Profuse bloomer. M-L. 1961 All-America Camellia Selection Winner. 12-18" \$5.00

**BRIGADOON** (P.A.F.)—Large, semi-double, orchid pink. Profuse bloomer. Vigorous, upright growth with fine foliage. M-L. 12-18" \$6.60\*

**CITATION** (Williamsii Semi-Double)—A beautiful pale-pink, ruffled petaled, semi-double. Vigorous, upright growth. M-L. 18-24" \$7.50; 24-30" \$10.00\*

**DONATION**—The finest of the Williamsii Hybrids. Large, semi-double, deep pink. Prolific bloomer. Medium, upright growth. M. 12-18" \$5.00; 18-24" \$7.50

**DONATION VAR.**—A beautiful mottled white form of Donation. M. 12-18" \$5.00\*

**E. G. WATERHOUSE**—This new clear pink formal double is outstanding. Vigorous, upright growth. M-L. 12-18" \$7.50; 18-24" \$10.00\*

**FELICE HARRIS**—This beautiful new hybrid was originated by Mr. Howard Asper. Medium to large, light pink peony type flowers, borne on a vigorous, upright shrub. Outstanding. M-L. 12-18" \$7.50\*

**FLIRTATION** (Pl. Pat. No. 1988)—New. Medium-large, silvery pink, single. Compact, upright growth. Profuse bloomer. Developed by Armstrong Nurseries. E-M. 12-18" \$5.50\*

**J. C. WILLIAMS**—A lovely, light pink, medium-sized, single. Profuse bloomer. Medium, bushy growth. M-L. 12-18" \$4.00; 18-24" \$5.00; 24-30" \$7.50

**LADY GOWRIE**—A very beautiful, large, semi-double, fuchsia-pink, with approximately 20 petals. Vigorous, pendulous growth. M. 24-30" \$7.50

**MARGARET WATERHOUSE**—A lovely, light pink, medium-sized, semi-double that blooms over a long period. Vigorous, upright. E-L. 24-30" \$7.50\*

**WALTZ TIME**—This hybrid (three-quarter japonica, one-quarter saluenensis) has everything—excellent foliage, shapely bush, and very large lilac-pink, semi-double flowers with long lasting qualities. M. 12-18" \$7.50; 18-24" \$10.00\*



We recommend  
**SUNSET MAGAZINE** as being one of the  
 best authorities on gardening for your  
 use, since it gives you new gardening in-  
 formation and practical methods. If you  
 are not presently subscribing, you will  
 find a convenient coupon bound in our  
 catalog.



Camellia hybrid 'BRIGADOON'

Camellia hybrid 'DONATION'



Camellia japonica 'PINK CLOUD'

## HARVEY SHORT'S

Again it is our pleasure to offer six new varieties to Harvey F. Short's "Camellias of Tomorrow." This interesting and select group marks another chapter in new form and color. Emphasis on the newest in sweet pea pink comes with one of the most charming of all flowers, Ballet Dancer. For eye appeal, the beautiful clear peach-pink of Magic Moments, and exciting variegated Extravaganza, together with Wonderland, a brilliant rose-red; Fortune Teller, a beautiful stylish pink, and Lovelight, a very large, new white, add much to the already popular Harvey F. Short varieties.

**ANITA'S TRIUMPH**—Large, high built peony form. Unusual oriental red with deep blood red streaks. Compact grower. Handsome foliage. M-L. 12-18" \$4.00\*

**BALLET DANCER**—Beautiful medium-large, peony form with mixed petals and petaloids of full form. Cream, shading to coral pink at edges. Medium, compact, upright growth. M-L. 12-18" \$7.50\*; 18-24" \$10.00\*

**BRIDE'S BOUQUET**—A very large white semi-double with fluted and notched petals. Medium, open growth. Long blooming season. M-L. 12-18" \$4.00\*; 18-24" \$5.00\*

**EXTRAVAGANZA**—Very large, 5½ to 6" anemone form. White, vividly and profusely marked and striped light red. Medium, compact, upright growth. M. 12-18" \$7.50





*Camellia japonica* 'Ballet Dancer'



*Camellia japonica* 'Guest of Honor'

## *Camellias of Tomorrow*

**FIRE FALLS** — Glowing crimson. Large, irregular double to peony form. Excellent texture. Vigorous, handsome foliage. E-M. 12-18" \$4.00\*; 18-24" \$5.00\*

**FORTUNE TELLER** — A beautiful new stylish, semi-double to loose peony in the favorite "Wildwood" shade of pink — light, orchid pink. Vigorous, bushy growth with large medium-green foliage. M-L. 12-18" \$7.50\*

**FROSTY MORN** — A very large white anemone to peony form with beautiful long, narrow, slightly twisted foliage. Medium, open, upright growth. M-L. 12-18" \$5.00\*; 18-24" \$7.50\*; 24-30" \$10.00\*

**GALLANT ARRAY** — Beautiful rich red, semi-peony form to full double. Mrs. Chas. Cobb seedling (better color). Excellent. 12-18" \$5.00\*

**GRAND FINALE** — White. Very large irregular semi-double with fan shaped, fluted petals and unusual mass stamen formation. Beautiful foliage. Medium compact growth. M. 12-18" \$6.00\*

**GUEST OF HONOR** — (Margaret Hertrich Award 1955.) Large, semi-double to peony. Salmon-rose. Vigorous, compact, upright grower. M. 12-18" \$6.00\*; 18-24" \$7.50\*; 24-30" \$10.00\*

**LOVELIGHT** — Very large 5½ to 6" semi-double with prominent golden stamens. Vigorous, bushy, upright. 12-18" \$7.50\*

**MARGARET SHORT** — Large 5-5½" semi-peony of unusual shade of lavender pink at edges of petals with coral tint toward center of flower. Mass of interesting light colored stamens surrounded by rabbit ear petals. Compact grower. M. 18-24" \$7.50\*; 24-30" \$10.00\*

**MASTERPIECE** — Its 4½ to 5-inch, pure white, rose form blossoms are deep petaled, cup shaped and 3 inches deep. Foliage unusually large with open, vigorous growth, makes this camellia a very handsome shrub as well as a beautiful flower. E-M. 12-18" \$3.00; 18-24" \$4.00; 24-30" \$7.50

**PINK CLOUDS** — Cream pink, marked deeper pink, changing to light lavender pink as flower ages. Very large anemone form. Vigorous, bushy growth. M. 12-18" \$6.00; 18-24" \$7.50; 24-30" \$10

**SEVENTH HEAVEN** — Light rose-pink. Large, full semi-double with wide petals and small petaloids in center. Vigorous, open, upright growth. M. 18-24" \$7.50; 24-30" \$10.00\*

**SNOW PALACE** (Elegans Seedling) — A 4½-5½" semi-peony in pure white, showing a few golden stamens among many short petaloids. Handsome rolled guard petals of velvety texture. Rich, dark green foliage. E-M. 12-18" \$5.00\*

**SUNSET GLORY** — Large, coral red anemone form. Excellent texture. Vigorous open growth. M. 18-24" \$7.50\*; 24-30" \$10.00\*

**WONDERLAND** — Very large, 5½ to 6" brilliant rose-red, semi-double to peony form. Vigorous open growth. M-L. 12-18" \$7.50



# GREAT FAVORITES OF YESTERDAY & TOMORROW

Even though we and other camellia growers throughout the world are constantly testing and developing new and finer varieties, the following camellias continue through the years to compete and remain popular because of their unsurpassed beauty and quality.

12"-18" \$2.00; 18"-24" \$2.50; 24"-30" \$6.50; 30"-36" \$7.50

**ADOLPHE AUDUSSON**—Large semi-double, deep red. Upright, compact growth. M.

**ALBA PLENA**—Large white, formal double. Medium, bushy growth. E-M.

**ANITA**—Light pink, striped carmine. Medium to large, semi-double. Tall, compact growth. 12"-18" only.

**ARAJISHI (Aloha)**—Salmon-red to deep crimson-red. Very early bloomer. Large peony form. Vigorous, upright, open growth. E. 12"-18" only.

**BELLA ROMANA**—Light pink, striped crimson. Medium-large, double. Medium, bushy growth. M. 12"-18" only.

**BLOOD OF CHINA**—Deep salmon-red. Large, semi-double to loose peony form. Vigorous, upright, compact. L.

**CHANDLERI ELEGANS PINK (Francine)**—Rose-pink. Large anemone form. Medium, spreading growth. E-M.

**CHANDLERI ELEGANS VAR.**—Rose-pink mottled with white. Large anemone form. Medium, spreading growth. E-M.

**C. M. HOVEY (Col. Firey)**—Brilliant, deep red. Large, full double, imbricated. Medium, loose, upright growth. L.

**COVINA**—Rose-red. Medium, semi-double. Excellent landscape variety. Medium, bushy growth. M. 12"-18", 18"-24", 24"-30" only.

**DAIKAGURA RED**—Bright rose-pink. Large peony form. Slow, compact growth. E-L. 12"-18", 18"-24" and 24"-30" only.

**DAIKAGURA VAR.**—Bright rose-pink, splotted with white. Large, loose peony form. Slow, compact growth. E-L. 12"-18", 18"-24" and 24"-30" only.

**DEBUTANTE**—Soft pink. Large, full peony form. Vigorous, loose, upright growth. E-M.

**DONCKELARI (Southern)**—Very large semi-double red sometimes marbled white. Slow, bushy growth. M. 12"-18" only.

**ELENA NOBILE**—Bright flame-red. Medium, formal double, showing stamens when fully opened. Medium, upright, compact growth. L. 12"-18", 24"-30".

**EMPEROR OF RUSSIA**—Scarlet. Large, double to peony form. Slow, compact growth. M. 12"-18", 18"-24" only.

**EMPEROR OF RUSSIA VAR.**—Variegated form of Emperor of Russia. Scarlet, spotted with white. Slow, compact growth. M. 12"-18" only.

**FIMBRIATA**—Resembles Alba Plena with the exception of the petals which are beautifully fringed. Medium, bushy growth. E-M.

**FINLANDIA**—White. Large, semi-double with fluted petals. Medium, bushy, compact. M.

**FINLANDIA VAR.**—White, streaked and speckled red form of Finlandia. Medium, bushy, compact. M.

**FLAME**—Flame-red. Very large semi-double. Large petals. Medium, upright growth. M. 12"-18" only.

**GEN. GEORGE PATTON**—Bright pink. Large, formal double showing stamens. Vigorous, upright, open growth. M-L.

**GIGANTEA (Emperor Wilhelm)**—Brilliant red, marbled with white. Very large semi-double to peony form. Vigorous, upright, open growth. M.

**GOV. EARL WARREN**—Deep, rich pink. Very large, semi-double. Vigorous, bushy, spreading growth. M.

**HERME (Jordan's Pride)**—Pink with white border, streaked rose-pink. Large, semi-double. Vigorous, open, upright. M.

**HIGH HAT**—Pale pink sport of Daikagura. Slow, compact growth. E-L.

**KUMASAKA**—Rose-pink. Large, full double. Upright and compact growth. M-L.

**LADY CLARE**—Rose-pink. Very large semi-double. Prominent golden stamens. Vigorous, bushy growth. E-M.

**LALLAROOK (Laurel Leaf)**—Pink, marbled with white. Large, full double imbricated. Medium, upright, compact. M-L.

**LOTUS**—White. Very large semi-double. Prominent stamens. Vigorous, upright, open growth. M. 12"-18" only.

**MARGARET HIGDON**—Large, semi-double, rose-red. Vigorous, upright, compact. M. 12"-18", 18"-24" only.

**MARGARETE HERTRICH**—White. Medium large, formal double. Vigorous, compact, upright. M.

**MATHOTIANA (Julia Drayton)**—Crimson-red. Very large, full double imbricated, showing stamens when fully opened. Vigorous, bushy growth. M-L.

**MEREDITH LAKE**—Pale lavender-pink. Medium, semi-double. Vigorous, bushy growth. M. 12"-18" only.

**MME. HAHN**—Bright salmon pink. Large, semi-double to peony form. Vigorous, upright growth. M.

**MT. SHASTA**—White. Large, full peony form. Upright, compact growth. M-L. 12"-18" only.

**MRS. CHARLES COBB**—Dark coppery red. Large, semi-double to loose peony form. Vigorous, upright. E-M.

**MRS. TINGLEY**—Light silvery-pink. Medium to large, formal double imbricated. Medium, compact. M-L.

**NAGASAKI**—Rose-pink marbled with white. Very large, semi-double. Medium, spreading growth. M. 12"-18", 18"-24" only.

**PAX**—White. Large, flat formal double. Medium, upright, compact. M-L.

**PINK BALL**—Soft pink. Medium large, full peony form. Vigorous, compact, upright. M. 12"-18" only.

**PINK PERFECTION**—Shell pink. Medium, formal double. Medium, bushy, upright. E-L.

**POPE PIUS IX**—Rich orange-red. Large formal double imbricated. Medium, compact, upright. M.

**PRINCESS BACIOCCHI**—Deep rose-red. Large semi-double to semi-peony form. Vigorous, bushy growth. M.

**PROF. C. S. SARGENT**—Dark red. Medium, full peony form. Vigorous, bushy, upright. M.

**PURITY**—White. Medium, formal double showing stamens when fully opened. Vigorous, upright. L.

**ROSEA PLENA**—Rose pink with dark veins. Large, rose form double. Vigorous, compact, upright. E-M.

**ROSEA SUPERBA**—Rose-pink. Very large, rose form double. Vigorous, compact growth. M-L.

**VEDRINE (Ruby Glow)**—Ruby-red. Large, semi-double to peony form. Vigorous, upright. E-M.





# SASANQUA

# Camellias

**APPLE BLOSSOM**—White blushed pink. Single. Vigorous spreading growth. 12-18" \$2.50; 18-24" \$3.50; 24-30" \$6.50; 30-36" \$7.50

**AUSTRALIAN HIRYU**—This fine variety, imported from Australia by William E. Wylam, is a large, brilliant rose-red, semi-double, with excellent texture and substance. Upright, compact growth. 12-18" \$2.50; 18-24" \$3.50; 24-30" \$6.50

**BETTY PATRICIA**—New. Very large rose form double. Rose-pink. Vigorous, compact, upright. 12-18" \$2.50; 18-24" \$3.50; 24-30" \$7.50

**BRIAR ROSE**—Soft clear pink. Single. Vigorous, open, upright growth. 12-18" \$2.50; 18-24" \$3.50; 24-30" \$6.50; 30-36" \$7.50

**BROOKSIE ANDERSON**—New. Small double light orchid pink. Profuse bloomer. Extremely bushy growth with small dark green foliage. 12-18" \$2.50; 18-24" \$3.50; 24-30" \$7.50

**CHANSONETTE** (Ralph S. Peer Award Winner 1959)—A beautiful new sasanqua that will soon be a favorite of all. Brilliant pink. Large, formal double with ruffled petals. Vigorous, bushy, upright growth. 12-18" \$5.00\*; 18-24" \$7.50\*

**CHARMER**—New. Single white, edge salmon pink. Large. Upright open growth. 12-18" \$4.00; 18-24" \$5.00

**CLEOPATRA**—Rose-pink. Semi-double to peony type. Very compact. 12-18" \$2.50; 18-24" \$3.50; 24-30" \$6.50

**COTTON CANDY**—New. Large semi-double, with ruffled petals. Clear light pink. 12-18" \$5.00\*

**DAWN**—Beautiful single to semi-double, ivory white with blush pink at the margins of petals. Upright and compact growth. 12-18" \$2.50; 18-24" \$3.50; 24-30" \$6.50

**FUKUZUTSUMI**—Large, irregular semi-double white, shaded rose. Unusually fragrant. Vigorous, upright growth. 12-18" \$2.50

**GIN-NO-SAE**—Small, creamy white, full anemone form. Spreading growth. 12-18" \$2.50; 18-24" \$3.50

**HANA JIMAN**—Large single white, tipped with pink. Fluted petals. Vigorous, upright and compact. 12-18" \$2.50; 18-24" \$3.50; 24-30" \$6.50; 30-36" \$7.50

**HINODEGUMA**—Large, single white with pink edge. Vigorous, upright, bushy growth. 12-18" \$2.50; 18-24" \$3.50; 24-30" \$6.50; 30-36" \$7.50

**HINODE-NO-UMI**—New. Very beautiful. Large, flat single. Deep crimson. Profuse bloomer. Upright, compact. 12-18" \$2.50; 18-24" \$3.50; 24-30" \$6.50

**HIRYU**—Deep crimson-red. Double. Vigorous, upright compact growth. 12-18" \$2.50; 18-24" \$3.50; 24-30" \$7.50

**HIRYU-NISHIKI**—Variegated red and white form of Hiryu. 12-18" \$4.00\*; 18-24" \$5.00\*

**HUGH EVANS**—Profuse bloomer. Single pink. Vigorous, upright and compact. 12-18" \$2.50; 18-24" \$3.50; 24-30" \$6.50; 30-36" \$7.50

**INTERLUDE**—First release. Beautiful light pink. Large rose form to formal double. Vigorous, compact, upright growth. 12-18" \$5.00\*

**JEAN MAY**—This outstanding new Sasanqua will soon become the favorite of all because of its glossy foliage and compact, upright habit of growth. Large, shell pink, double blossoms. Excellent. 12-18" \$2.50; 18-24" \$3.50; 24-30" \$7.50; 30-36" \$10.00

**KO-GYOKU** (Little Gem)—Small, full formal double, white with edges of petals slightly marked with pink. Upright, compact. 12-18" \$2.50; 18-24" \$3.50; 24-30" \$7.50\*; 30-36" \$10.00\*

**LAVENDER QUEEN**—Large, single, lavender-pink. Vigorous, loose, spreading growth. 12-18" \$2.50; 18-24" \$3.50; 24-30" \$6.50; 30-36" \$7.50

**MISS ED**—New. Light pink with deeper pink tints. Small, full double to peony form with wavy and notched petals. Vigorous, bushy, upright growth. Outstanding. 12-18" \$5.00\*; 18-24" \$7.50\*

**MOMOZONO NISHIKI**—Single, pale pink, shading to rose-red border. Vigorous, upright, bushy growth. 12-18" \$2.50; 18-24" \$3.50; 24-30" \$6.50; 30-36" \$7.50

**NARUMIGATA**—Single white, shaded with pink. Very large. Compact, vigorous, upright. 12-18" \$2.50; 18-24" \$3.50; 24-30" \$6.50; 30-36" \$7.50

**NAVAJO** (J #12)—Large, heavy textured semi-double, brilliant rose-red fading to white in center. Bushy, compact, upright growth. 12-18" \$2.50; 18-24" \$3.50; 24-30" \$6.50; 30-36" \$7.50

**NODAMI USHIRO**—Large, deep pink, semi-double. Vigorous, compact growth. 12-18" \$2.50; 18-24" \$3.50; 24-30" \$6.50; 30-36" \$7.50

**PALE MOONLIGHT** (J #3)—Pale, orchid-pink, rabbit-eared, semi-double with excellent texture. Small foliage, low, spreading growth. 12-18" \$3.50

(Continued on next page)



## SASANQUA CAMELLIAS—Continued

**PINK SHOWER**—First release. Light pink. Large, semi-double with petals shirred at edges and notched and flared stamens. Outstanding. Vigorous, open growth. 12-18" \$5.00\*; 18-24" \$7.50\*

**PINK SNOW**—A clear, light pink anemone with vigorous, low spreading growth. New. 12-18" \$2.50; 18-24" \$3.50; 24-30" \$7.50

**RAINBOW (J #8)**—Large, single white with brilliant red border on each petal. Vigorous, bushy, upright. 12-18" \$2.50; 18-24" \$3.50; 24-30" \$6.50; 30-36" \$7.50

**ROSY MIST**—Large, single, delicate soft pink. Spreading growth. 12-18" \$2.50

**SETSUGEKKA**—A large single to semi-double white with ruffled petals that are slightly marked with pink at edges. Vigorous, upright. 12-18" \$2.50; 18-24" \$3.50; 24-30" \$6.50; 30-36" \$7.50

**SHOWA-SUPREME**—This seedling of Showa-no-Sakae has proven superior to its parent. Feathery, full peony, deep clear pink. Vigorous, spreading growth for ground cover, and may be easily handled for upright growth. Foliage much heavier than Showa-no-Sakae. 12-18" \$2.50; 18-24" \$3.50; 24-30" \$7.50

**SNOWFLAKE**—Beautiful, flat, large-petaled single white, with large, deep green foliage. Vigorous, upright, bushy. 12-18" \$2.50

**SPARKLING BURGUNDY** (Pl. Pat. No. 1539)—The All-America Camellia Selections Winner for 1960. This fine new burgandy-red, full double sasanqua, with its rapid upright growth and profuse blooming habit, will become a favorite with all who try it in their gardens. 12-18" \$5.00; 18-24" \$7.50; 24-30" \$10.00

**TANYA**—Deep rose pink. Single. Excellent spreading bushy growth habit. 12-18" \$2.50; 18-24" \$3.50; 24-30" \$7.50

Camellia sasanqua 'JEAN MAY'

Camellia sasanqua 'YAE ARARE'

'SETSUGEKKA

'NODAMI USHIRO'



**SHINNOME** (Shishifukujin)—Very large, clear, soft pink. Single to semi-double. Upright, bushy growth. 12-18" \$2.50; 18-24" \$3.50; 24-30" \$6.50; 30-36" \$7.50

**SHISHI GASHIRA**—Double, bright rose-red. Slow, low and compact. 12-18" \$2.50

**SHOWA-NO-SAKAE**—Semi-double to peony. Soft pink. Slow, low and compact. 12-18" \$2.50; 18-24" \$3.50; 24-30" \$6.50; 30-36" \$7.50

**WHITE DOVES** (Mine-no-Yuki)—White, semi-double to loose peony form. Vigorous, spreading grower. 12-18" \$2.50

**WHITE FRILLS**—A fine new white semi-double sasanqua. Blossom resembles Setsugekka with growth habit of White Doves. 12-18" \$3.00; 18-24" \$4.00

**YAE ARARE**—Beautiful, large single white with petals tipped pink. Vigorous, bushy, upright growth. 12-18" \$2.50; 18-24" \$3.50; 24-30" \$6.50; 30-36" \$7.50





*Camellia sasanqua* 'HIRYU'



*Camellia reticulata* 'BUDDHA'

## RETICULATA *Camellias*

SEE NEXT PAGE FOR DESCRIPTIONS



*Camellia reticulata* 'CRIMSON ROBE'





## RETICULATA CAMELLIAS

**BUDDHA**—(Pl. Pat. No. 1215.) Winner of the 1957 All America Camellia Selections. A new reticulata that soon will become a favorite. Very large, orchid pink, semi-double with beautiful rabbit ears. Extremely vigorous, upright, open growth. Outstanding in warm sections. January-March. 12-18" \$7.50\*; 24-30" \$12.50\*

**BUTTERFLY WINGS**—Six-inch rose-pink blossoms, with large, wavy petals. Slender, open growth. M-L. 12-18" \$7.50\*; 18-24" \$10.00\*; 24-30" \$12.50\*

**CAPT. RAWES**—Brilliant pink. Very large, wavy and fluted petals. Semi-double. L. 12-18" \$5.00\*; 18-24" \$7.50\*; 24-30" \$10.00\*

**CHANGS TEMPLE**—Extremely large, brilliant pink, variegated semi-double. Vigorous, compact growth. M-L. 12-18" \$7.50\*; 18-24" \$10.00\*; 24-30" \$12.50\*

**CHRYSANTHEMUM PETAL**—Full double, imbricated pink, about 4 inches in diameter, with each petal fluted. Slender, open growth. M. 12-18" \$7.50\*

**CONFUCIUS**—Large, high centered semi-double orchid-pink with intermingled petaloids and stamens in center. Vigorous, compact, upright growth. M. 12-18" \$7.50\*; 24-30" \$12.50\*; 30-36" \$15.00\*

**CORNELIAN**—Very large, deep rose, heavily marbled with white, semi-double, with wavy petals, and small petaloids in center. Medium, bushy growth. M-L. 12-18" \$7.50\*; 18-24" \$10.00\*; 24-30" \$12.50\*

**CRIMSON ROBE**—Very large, semi-double, carmine red. Petals are crepe textured, wavy and crinkled. Large foliage. Vigorous, upright, bushy. M-L. 12-18" \$7.50\*; 18-24" \$10.00\*; 24-30" \$12.50\*; 30-36" \$15.00\*

**LION HEAD**—Very large, semi-double, deep red, with each petal heavily variegated white. Vigorous, compact growth. M-L. 12-18" \$7.50\*; 18-24" \$10.00\*; 24-30" \$12.50\*

**MOUTANCHIA**—Bright pink, veined white. Large to very large, formal double with wavy, crinkled crepe-like petals. Medium, bushy growth. L. 12-18" \$10.00\*; 18-24" \$15.00\*

**NOBLE PEARL**—A 6-inch semi-double flower, with large, beautifully textured petals, deep red. Slow, compact growth. L. 12-18" \$10.00\*

**PAGODA**—Light red flowers, similar in form to Purple Gown, but more double, though small in diameter. Medium, compact growth. M-L. 12-18" \$7.50\*; 24-30" \$12.50\*; 30-36" \$15.00\*

**PROFESSOR TSAI**—Large, rose-pink, semi-double with loose petal arrangement. Open, spreading growth. M-L. 12-18" \$7.50\*; 24-30" \$12.50\*

**PURPLE GOWN**—A 5 to 7-inch formal to peony form, deep purple-red with white variegation. Beautiful. Slow, compact growth. M-L. 12-18" \$10.00\*

**SHOT SILK**—Brilliant pink, semi-double flowers, with loose, wavy petals informally arranged. Vigorous, upright, compact growth. M-L. 12-18" \$7.50\*

**TAKEIYEH** (Large Osmanthus Leaf) — Medium large, vivid orchid-pink, with wavy petaloids intermixed with stamens. Medium, compact growth. M-L. 12-18" \$7.50\*; 18-24" \$10.00\*; 24-30" \$12.50\*; 30-36" \$15.00\*

**TALI QUEEN**—Deep pink, lightly variegated with white; 6 inches or more in diameter. Large, heavily textured petals. Slow, compact growth. L. 12-18" \$10.00\*

**WILLOW WAND**—Large, orchid-pink, formal double blossoms opening to semi-double, with wavy petals. Vigorous upright growth. M-L. 12-15" \$7.50\*; 18-24" \$10.00\*; 24-30" \$12.50\*; 30-36" \$15.00\*

## CAMELLIA SPECIES

In recent years a great deal of interest in Camellia species has developed not only for hybridizing purposes, but for their unusual and interesting growth habits, foliage and flowers. We offer, for the first time, a few of the better rare species for your selection.

**C. FRATERNA**—Small, white, single blooming in clusters on graceful, arching branches. Small foliage with pendulous growth habit. Excellent for hanging baskets or Bonsai. M. 12-18" \$7.50\*

**C. GRANTHAMIANA**—This newly discovered species will add tremendous interest to hybridizers as well as Camellia enthusiasts. Its unusual foliage, large and heavily ribbed, 4½ to 5' creamy white, single blossom, with cluster of golden stamens, will make this a must in every garden. E-M. 12-18" \$7.50\*

**C. IRRAWADIENSIS**—One of the most vigorous of the species. Very large foliage with small creamy white single blossoms. 12-18" \$7.50\*

**C. OLEIFERA**—Medium, single white with cluster of golden stamens. Vigorous, upright, open growth. M-L. 12-18" \$5.00

**C. ROSAEFLORA**—A bushy, upright, graceful shrub with small foliage, producing an abundance of very small, single rose-pink blooms. 12-18" \$7.50\*

**C. SALICIFOLIA**—A low, bushy shrub with very long, narrow foliage. Small, white, single blossoms. E-M. 12-18" \$7.50\*

**C. SALUENSIS**—A very lovely pink and white, medium size, single that blooms profusely, on long, upright, vigorous growth. Excellent for landscape and hybridizing. M-L. 12-18" \$5.00\*



# EVERGREEN AZALEAS

## Introduction

Many gardeners seem confused when confronted by a plant obviously appearing to be an azalea, yet labeled *Rhododendron*. Invariably, the question arises. "Just what is the difference between the two?" Botanically speaking, azaleas are a section of that large and varied genus *Rhododendron*, although commercial growers have found it expedient to retain the old name "azalea" for such well known forms as Kurumes, Belgian Indicas, Southern Indicas, Pericats and Rutherfordianas. These are the evergreen azaleas which are listed in our catalogue and are the most popular types in America.

## BELGIAN INDIAN HYBRIDS (Belgian Hybrids)

As the name implies, this group was developed primarily in Belgium, although similar work was done in England, Germany and France. It was intended by the originators that they be used as greenhouse or forcing azaleas, and rightfully so. However, where weather conditions permit (30° - 20°), as in Southern California, they make excellent landscape material. They have wonderfully dense foliage and literally cover themselves with large, semi-double or double flowers from October through April.

## SOUTHERN INDIAN AZALEAS (Southern Indicas—Sun Azaleas)

Southern Indica azaleas are so-called because these are the varieties generally seen in the famous azalea gardens of the southeastern part of the United States and were selected out of the Belgian Indian azaleas as being suitable for out-of-doors planting. They are considered to be harder (20° - 10°) than the Belgian Indian hybrids and more rapid and vigorous growing; consequently, giving us our largest evergreen types. They culture beautifully in full sun and offer a wider range of color in single type blossoms, making them most effective in landscape in the milder climates of California and the Southeast.

## KURUME HYBRIDS

The first representatives of this well known group of dwarf evergreen azaleas were introduced from Japan about 1915. The Kurumes are exceptionally free flowering with a dense, compact growth habit, and small, single to hose-in-hose type blossoms. They are very hardy (10° - 5°) and range in color from white through shades of pink mauve, lavender and red. A few varieties of Kurumes are often confused and listed with Southern Indicas, such as White April, Snowbird and Laughing Water. This has been done because of their vigorous, upright growth; large, single blossoms, full sun culture and landscape use. To avoid confusion in our list of Kurumes, these will be indicated as Southern Indian types.

## PERICAT HYBRIDS

Named after Alphonse Pericat of Collingdale, Pennsylvania, they were bred primarily as greenhouse forcing azaleas. These are believed to be the result of crosses between the Belgian Indian and Kurume azaleas and are

almost as hardy as the Kurumes. Individually, the flowers are larger than most Kurumes and resemble the Belgian Indians. Sometimes they are grouped with the Belgian Indians in nursery catalogs.

## RUTHERFORDIANA HYBRIDS

These were supposedly the result of crosses between *Rhododendron* "Pink Pearl," "Charles Dickens," "Mrs. C. S. Sargent," and the Belgian Indian and Kurume azaleas, although there is no outward evidence of the *Rhododendron* parentage in the Rutherfordiana azaleas. Nevertheless, this group is distinct and very attractive. The plants are vigorous, compact with good foliage and are best suited as greenhouse forcing plants. The color range is from white, pink, red, to orange-red and purple, and are medium to large, hose-in-hose to double types. Around San Francisco and southwards to Los Angeles, the Rutherfordiana hybrids are used as landscape items. They perform admirably out of doors in regions where winter temperatures do not fall below 20 degrees.

## GOLD CUP AZALEAS (Mossholder-Bristow Hybrids)

This new group of azaleas is rapidly growing in popularity because of their beautiful, large, single to full double Belgian Indica type flowers and vigorous growing Rutherfordiana type plants. They range in color from white through shades of pink and make excellent pot plants for forcing and are ideal landscape material in areas not colder than 20 degrees.

## SATSUKI AND MACRANTHA (INDICUM) AZALEAS

These two groups are listed together because both are late bloomers (May - July) and are of the same basic parentages. They are both the works of Japanese hybridizers. One major difference between the two is growth habit. The Satsuki azaleas have a low, dense, compact, very attractive growth pattern with large, single, ruffled flowers. The Macranthas are basically more upright, with feathery, small foliage. Both are excellent in landscape and hardy down to 5 degrees.

## AZALEAS IN THE LANDSCAPE

No other flowering shrub has contributed more to the gardens of America than the azalea, when one considers that by proper selection of varieties, color in the garden can be had from October through June.

Azaleas can be handled as pot plants, mass plantings, specimens, tree types, espalier and hedges. The versatility of this plant is unlimited. However, most azaleas are at their best when planted in groups or drifts. An ideal situation for them would be among high trees so spaced as to allow the sun and light to penetrate, yet providing intervals of shade to give the plants some respite from the hot sun. Where there are not trees, the north or east side of a house or high fence would be desirable. It is true that many azaleas thrive in full sun, especially along the coastal areas, but the Southern Indians are best suited for full sun plantings. (Continued on next page)



Muccio's  
Nurseries

FAVORITE

AZALEAS



Belgian indica azalea 'ALBERT AND ELIZABETH'



Belgian indica azalea 'PINK PEARL'

#### CULTURE — SOIL

Azaleas may be grown successfully in various acid soil mixtures, such as leaf mold (redwood, pine and oak), sand and light loam, but for best results, pure peat moss or  $\frac{2}{3}$  peat and  $\frac{1}{3}$  soil plantings have proven best. The hole need not be over 15" deep and 18 to 24" in diameter. Do not set the plant lower or higher than it was originally growing. Always soak peat moss thoroughly before using. Fill around ball of plant firmly and make certain that good drainage is maintained.

#### WATERING

Azaleas, much like camellias, should be moist at all times, but caution should be taken against their being wet at all times. Water well and deeply, but only as often as your own weather conditions demand. In areas such as Southern California where summer months are dry and arid, daily spraying of the foliage is very beneficial.

#### FERTILIZING

Azaleas are basically light feeders and caution should be taken never to over-feed. Three to four feedings spaced from March through September (6 to 8 weeks) is sufficient. Cottonseed meal or a commercial acid food for azaleas should be used. Never fertilize an azalea when leaves show a yellow or paleness between the veins. This is usually caused by lack of available iron and will most often respond to application of one of the many new chelated irons. Continue the use of iron instead of fertilizer until foliage becomes green. Alkalinity in the water is the usual cause of iron deficiency, and in many instances replanting in fresh peat moss can bring about a quick recovery.

#### PRUNING

Heavy pruning of undesirable branches should be done when they are at their peak of bloom and used as cut flowers. Most varieties of azaleas require one good pinch-







Rutherford azalea 'ROSE QUEEN'



Belgian indica azalea 'VERVAENEANA ALBA'



Rutherford azalea 'L. J. BOBBINK'

ing or pruning of the new spring growth in July, thus creating more branches and bushiness for fall bud setting. However, when plants are young and vigorous, such as the Southern Indicas, pruning on new growth should continue through September. Bear in mind that azaleas can be cut anywhere on the branches without having to carefully cut above a bud or a side branch, because wherever you cut an azalea branch, it will leaf out just below the cut.

#### PEST CONTROL

Azaleas are comparatively free of insects and diseases, but for good, healthy, pest-free plants, a precautionary spraying in late spring (after blooming) and fall of Malathion or Kelthane can eliminate the danger of thrips and mites. These are the most common pests and can do a great deal of damage to azalea foliage. They feed on the undersurface of leaves, giving the foliage a brown or grayish appearance. Always make certain that spraying is necessary by consulting your local nurseryman.

### Special Quantity Discount on All Azalea Varieties

All \$1.50 varieties

**Any 6 \$8.40—Any 12 \$15.00**

All \$1.75 varieties

**Any 6 \$9.75—Any 12 \$17.00**

All \$2.00 varieties

**Any 6 \$11.00—Any 12 \$19.20**

Kurume azalea 'HEXE'



Kurume azalea 'CORAL BELLS'





# OUTSTANDING EVERGREEN AZALEAS

## KURUME AZALEAS

**BRIDESMAID**—Bright salmon-red, single. M.

**CHRISTMAS CHEER** (Cherry Ripe)—Flowers Christmas red, small, hose-in-hose. E-M.

**CORAL BELLS**—Coral-pink shading, deeper toward center. Flowers small hose-in-hose.

**FUJI-NO-ASAHI**—Medium size flowers, hose-in-hose. White with faint salmon-pink, flushed on tips of the petals. M.

**HEXE**—Flowers large, crimson-red, hose-in-hose. M.

**HIME-KAGAMI**—Flowers small hose-in-hose. White with occasional stripe of pink. M.

**HINO-CRIMSON**—Medium size, single, brilliant red. Very dwarf and compact. M.

**HORTENSIA**—Flowers hose-in-hose, phlox pink. M.

**KAMAKURA**—Flowers hose-in-hose, soft carmine-rose, occasionally striped with darker pink. M.

**KUMOI**—Medium, hose-in-hose flowers with crinkled petals. Light carmine-rose. M.

**LAUGHING WATER** (Southern Indica Type) One of the finest. Large, single, white. Vigorous growth. EM - M.

**MOONBEAM** (Southern Indica Type) —Flowers large, single, light lavender. E-M.

**RUBY GLOW** (Ward's Ruby)—Very small, single, brilliant, darkest rich red. M.

**SALMON BEAUTY**—Medium size, hose-in-hose, beautiful salmon-pink. M.

**SANTOI**—Flowers small, single, white with flesh margin. M.

**SERAPHIM**—Flowers hose-in-hose. Rich pink, shading to pale pink center. M.

**SHERWOOD RED**—Extremely brilliant, orange-red, single. M.

**SNOW**—Pure white flowers, hose-in-hose, profuse. M.

**SNOWBIRD** (Southern Indica Type)—Very large, single and white, with vigorous, spreading, open growth. EM - M.

**TWILIGHT**—Large, single, lavender. Vigorous. M.

**WHITE APRIL** (Southern Indica Type)—A very large, pure white single. Vigorous, upright growth with large foliage. M.

1 gal. Container \$1.50 each

## GOLD CUP AZALEAS

Mossholder-Bristow Hybrids

**BABY JILL** (P.P. #1706)—Large hose-in-hose light lavender-pink. M.

**DESERT ROSE** (P.P. #1701)—Very large, single to semi-double salmon-pink with red throat. E-M.

**EASTER BONNET** (P.P. #1703)—Large, single to semi-double lavender to white. M.

**EASTER PARADE** (P.P. #1707)—Large, ruffled, hose-in-hose, pink mottled white. M-L.

**PRINCESS CAROLINE** (P.P. #1702)—Medium, hose-in-hose, ruffled, salmon-pink with red throat. E-M.

**ROSE PARADE** (P.P. #1705)—Medium, double, pale-pink, rosebud type. M.

**SUN VALLEY** (P.P. #1708)—Large, single, hose-in-hose, shiny white—green throat. Finest late blooming white. L.

**WHITE ORCHIDS** (P.P. #1704)—Beautiful large, single to semi-double, ruffled white with showy red throat. E-M.

1 gal. Container \$1.75 each

## RUTHERFORDIANA AZALEAS

**ALBION**—Vigorous, hose-in-hose, white with green throat. M-L.

**CONSTANCE**—Large, single frilled, phlox pink. E-M.

**DOROTHY GISH**—Flowers hose-in-hose, frilled, orange-red. M-L.

**FIRELIGHT**—Profuse, semi-double to hose-in-hose, rose red. E-M.

**L. J. BOBBINK**—Beautiful orchid to white, frilled, hose-in-hose. One of the finest. M-L.

**MAMIE**—Vigorous, upright, flesh-pink, hose-in-hose. M-L.

**PURITY**—Flowers single to hose-in-hose, white. Excellent for forcing. E-M.

**ROSE DAWN**—Large, hose-in-hose, rose-pink. Large foliage and extremely rapid growth. M.

**ROSE QUEEN**—Flowers semi-double to hose-in-hose, medium pink. Low, spreading growth. Good forcer. E-M.

1 gal. Container \$1.50 each

## PERICATS

**MME. PERICAT**—Flowers hose-in-hose, light pink. M.

**MME. PERICAT PINK**—Sport of Mme. Pericat. Hose-in-hose, deep pink. M.

**SWETHEART SUPREME**—Flowers semi-double hose-in-hose, medium size, bluish pink. Resembles small roses. M.

1 gal. Container \$1.50 each

## SOUTHERN INDIAN AZALEAS

(Southern Indicas, Sun Azaleas)

**DUC DE ROHAN**—Medium size, single, salmon with rose throat. Compact, upright, small foliage. EM-M.

**FIELDER'S WHITE**—Large, single, white with faint green throat. Vigorous, upright growth. EM-M.

**GEORGE L. TABER**—Very large, single, light lavender-pink with white edges and rose throat. Extremely rapid, spreading growth. M-L.

**GLORY OF SUNNYHILL**—Flowers medium size, single, brilliant orange-red. Compact growth. Small, rich green foliage. M-L.

**IVERYANA**—Flowers variegated lavender-rose with white edges. Bushy, medium, low growth. M-L.

**PHOENICA**—Most popular of all the Southern Indicas. Large, single, purple. Excellent foliage with vigorous, upright growth. M.

**PRIDE OF DORKING**—The best red of all azaleas. Flowers single, brilliant red. Handsome, rich green foliage. Vigorous growth. L.

**SALMON SOLOMON**—Large, single salmon-pink. Sport of Southern Charm. Vigorous, spreading growth. M.

**SOUTHERN CHARM** (Judge Solomon)—Large, single, rose-pink. Sport of Formosa. Vigorous, spreading growth. M.

1 gal. Container \$1.50 each

## SATSUKI AND MACRANTHA AZALEAS

**BUNKWA**—Lovely single, bluish-pink. L.

**FIRMAMENT** (Macrantha)—Flowers single, salmon with white center. Bushy, upright. L.



SINGLE



HOSE-IN-HOSE



SEMI-DOUBLE



SEMI DOUBLE  
HOSE-IN-HOSE



DOUBLE

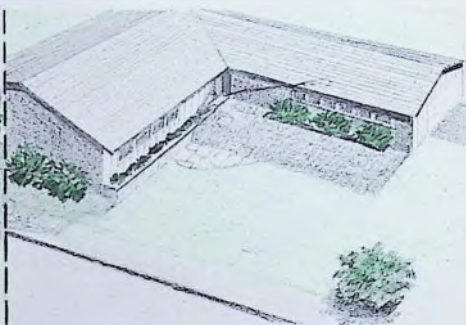


DOUBLE  
HOSE-IN-HOSE





AN IDEAL SITUATION FOR AZALEAS



NORTH AND EAST SIDE OF HOUSE OR FENCE PROVIDES PROTECTION FROM SUN AND WIND

**GEISHA GIRL**—Flowers single, rose-red with white center. Beautiful. L.

**GUNBI**—Beautiful, large, single, frilled, light pink, occasionally marked deeper pink. L.

**GUMPO**—Large, single, frilled, white with occasional rose-pink stripe. L.

**GUNREI**—Large, single, frilled, white with rose-pink throat. L.

**PINK GUMPO**—Clear, deep salmon-pink sport of Gumpo. L.

**PINK KOW-KOKU**—Large, single, deep salmon-pink. Bushy, upright. L.

**SHINNYO-NO-TSUKI**—Very large, single, purplish-red with white center. Upright growth. L.

**SUMMER SUN** (Macrantha)—Flowers single, brilliant orange-red. Small feathery foliage. Upright growth. L.

**VALO** (Macrantha)—Flowers medium, single, orchid. Low, spreading growth. Beautiful, large, round, glossy green foliage. L.

1 gal. Container \$2.00 each

### BELGIAN INDIAN AZALEAS (Belgian Hybrids)

**ADRIAN STEYART**—Large, double, mauve. M.

**ALBERT ELIZABETH**—All time favorite. Large, semi-double, frilled white with green throat and petals edged deep coral. EM-M.

**AVENIR**—Large, semi-double, hose-in-hose to double, orange-red. EM.

**BLUSHING BRIDE**—Very large, semi-double to hose-in-hose, bluish-pink. M-L.

**BRILLIANTIA**—Very large, semi-double, bright red. M-L.

**CALIFORNIA SUNSET**—Beautiful variegated sport of Avenir. Salmon pink with petals edged white. EM.

**CHIMES**—Flowers semi-double bell shaped, rich red. EM-M.

**DR. BERGMAN**—Semi-double variegated, coral-rose center to pink with a lighter border. EM.

**EMIL DE KONNICK**—Large, semi-double, hose-in-hose, ruffled, variegated, white with purple edge, occasionally washed orchid pink. M-L.

**ERIC SCHAME**—Flowers double, variegated salmon-pink and white. EM.

**JEAN HEARRENS**—Double, frilled, rose-pink. M.

**JOHN HEARRENS**—Large, double white with purplish-red edge. M-L.

**MME. MEMORIA SANDER** (Memoria Sander)—Blooms continuously from September through March. Double, brilliant rose-red. E-M.

**MME. ALFRED SANDER** (Fred Sander)—Large, double, rich red. Long blooming period. EM.

**ORCHIDFLORA**—Extremely large blooms, semi-double, orchid pink. EM-M.

**PAUL SCHAME**—Double, salmon pink to light orange. EM.

**PERLE DE SAFFELAERE**—Flowers double, pure white. M-L.

**PERLE DE SWEYNAERDE**—Double, hose-in-hose, frilled, white with green throat. One of the best. EM.

**PINK BERGMAN**—Beautiful sport of Dr. Bergman. Semi-double, flesh pink with rose throat. EM.

**PINK PEARL**—Large, double, pale pink sport of Vervaeneana. EM-M.

**PROF. WOLTERS**—Large, single, salmon-rose edged white. M.

**SWEET SIXTEEN**—Double, light orchid pink. EM.

**TEMPERANCE**—Flowers double, pale mauve. M.

**VIOLACEA**—Double, rich violet purple. M.

**VERVAENEANA**—Double, cameo pink with white margin and rose-red throat. EM-M.

**VERVAENEANA ALBA**—Double white with green throat. Sport of Vervaeneana. EM-M.

1 gal. Container \$1.50 each

### MISCELLANEOUS NEW HYBRIDS

**ALASKA** (Southern Indica Type)—Flowers single to semi-double, pure white. Excellent shrub. EM-M. 1 gal. \$1.50

**BALLERINA** (Kerrigan Hybrid, P.P. 1881)—Outstanding new hose-in-hose salmon-pink. Rutherfordiana type. EM-M. 1 gal. \$2.00

**CONTENT** (Glenn Dale Hybrid—Southern Indica Type)—Large, single, beautiful clear orchid. Beautiful glossy green foliage. M-L. 1 gal. \$1.50

**CRIMSON GLORY** (Belgian Indica Type)—Wonderful new rich red. Large, ruffled hose-in-hose. EM-M. 1 gal. \$1.50

**GLACIER** (Glenn Dale Hybrid—Southern Indica Type)—Large, single, shiny white with faint green tone. Handsome shrub and foliage. M-L. 1 gal. \$1.50

**RED POPPY** (Belgian Indica Type)—Very large, single to semi-double, darkest red. Long blooming season. Outstanding. E-M. 1 gal. \$1.75

**RED WING** (P.P. #1159—Brooks Hybrid)—Vigorous, large ruffled, hose-in-hose, brilliant red. Excellent landscape or forcing. EM-M. 1 gal. \$1.75

**REVERY** (Glenn Dale Hybrid—Southern Indica Type)—Flowers single, rose-pink on excellent shrub. M-L. 1 gal. \$1.50

**ROBIN** (Kerrigan Hybrid—P.A.F.)—Beautiful, new, large hose-in-hose, clear rich red. Hexe type shrub, Belgian type flower. M. 1 gal. \$2.00

**ROSEBUD** (Gable Hybrid)—Deep pink, double, hose-in-hose. Low, dense, slow-growing and very cold hardy. L. 1 gal. \$1.50



4" Mulch of Loose Material

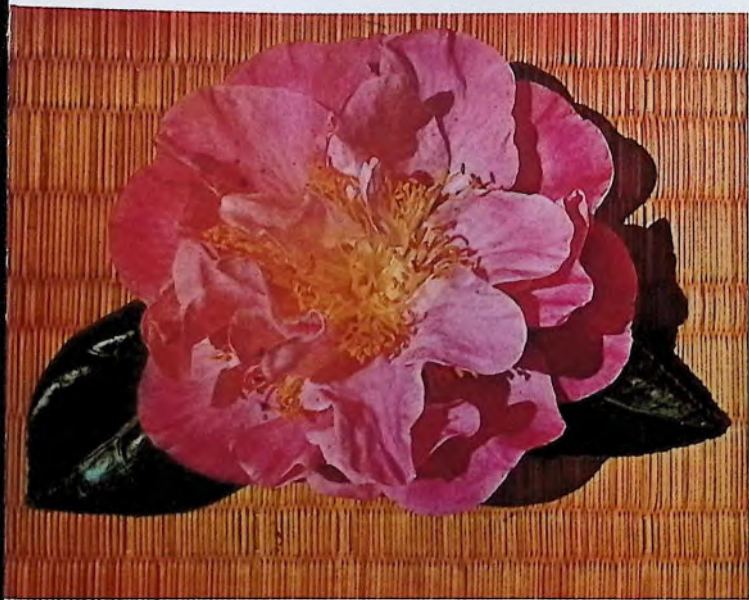




# Nuccio's Nurseries

3555 CHANEY TRAIL, ALTADENA, CALIF.  
Telephone: Area Code 213 SYcamore 4-3383





Coral Queen



new

INTRODUCTIONS  
AND  
SUPPLEMENTAL  
PRICE LIST AND CHANGES  
FOR 1963-64



PLEASE READ BEFORE ORDERING—

Prices and sizes in this folder cancel the list prices in the catalog.

The stock that we are offering our customers this season is the finest quality we have ever grown, plus reduced prices on many of the new varieties, with larger sizes available.

Muccio's  
Nurseries

GROWERS OF  
RARE CAMELLIAS  
SINCE 1935

Wildfire



# New Top Performance Camellias

**SILVER CHALICE** (N #5912)—Outstanding, large pure white peony. Large foliage. Upright, compact growth. E-M. 12-18" \$7.50\*; 18-24" \$10.00\*; 30-36" \$15.00\*

**CORAL QUEEN** (N #5620)—Beautiful, large fluted petals. Coral pink, semi-double. Vigorous, upright growth. M. 12-18" \$7.50\*; 18-24" \$10.00\*; 24-30" \$12.50\*; 30-36" \$15.00\*

**MIDNIGHT** (N# 5723) — Medium large, semi-double to anemone of darkest red. Unusual texture with metallic sheen. Dark foliage, compact, upright growth. E-M. 12-18" \$7.50\*; 18-24" \$10.00\*

**WILDFIRE** (N #5719)—Brilliant orange-red, semi-double, profuse bloomer. Vigorous, upright growth. E-M. 12-18" \$7.50\*; 18-24" \$10.00\*

**COED** (N #5721) — Large, formal to rose form double. Exquisite pale orchid pink. Upright, open growth. E-M. 12-18" \$3.00; 18-24" \$4.00; 24-30" \$7.50

**ACE O'HEARTS** (N #2541) — Profuse blooming, brilliant rose-red, semi-double. Excellent shrub with dark green foliage and vigorous, upright, compact growth. Fine for hedges and mass plantings. M-L. 12-18" \$2.50; 18-24" \$3.50; 24-30" \$6.50; 30-36" \$7.50

**TOUCHDOWN**—Beautiful rose-pink sport of Kick-off with the same flower form and early to late blooming qualities. 12-18" \$7.50\*

## New And Recent Introductions

**CLARK HUBBS** (Rowell #585) — Large to very large, full semi-double to loose peony form. Brilliant, rich red, with petals beautifully fimbriated. Upright, compact. This outstanding new camellia was developed by Mr. Milo Rowell of Fresno, California. M-L. 12-18" \$7.50\*

**MONA MONIQUE** (Park Hill)—A beautiful light pink, large formal double to irregular semi-double with shades of deeper pink towards outer edges of petals. Vigorous, upright. M. 12-18" \$7.50\*

**RED ROUGE** (Harvey Short)—Deep red to maroon. Large to very large, anemone form to peony form with loose petals. Vigorous, compact, upright growth. M-L. 12-18" \$7.50\*; 24-30" \$12.50\*

**CARL TOURJE**—Excellent new hybrid (Pitardii x Reticulata Chang's Temple) developed by the Huntington Library. Very large, semi-double with wavy petals. Soft pink with shadings of deeper pink. Vigorous, open, upright growth. M-L. 12-18" \$7.50\*

**JULIA FRANCE**—Very large, rose form double to semi-double, light pink. Large foliage; vigorous, upright growth. Outstanding. M. 12-18" \$6.00\*; 18-24" \$7.50\*

**EVELINA**—Very large white, peony form with large petals and petaloids interspersed among numerous yellow stamens. Medium, open growth. E-M. 12-18" \$7.50\*

**TIFFANY** (Pl. Pat. No. 2159)—A very large rose form to loose, irregular semi-double flower of warm pink with stamens intermixed with petaloids. Vigorous, upright growth. M. 12-18" \$5.00\*; 18-24" \$7.50\*; 24-30" \$10.00\*; 30-36" \$15.00\*

**JUDY MATTHEWS** — Very large, blush pink, peony form with loose, fluffy petals and fluted, twisted center petals interspersed with stamens. Medium, upright growth. M. 12-18" \$7.50\*

**DIXIE KNIGHT**—Deep red. Large, peony form with irregular petals and stamens. Vigorous, upright growth. M-L. 12-18" \$7.50\*



## New Top Performance Camellias

DISNEYLAND — 12-18" \$6.00\*; 18-24" \$7.50\*;  
24-30" \$10.00\*

ALEXIS SMITH — 12-18" \$6.00\*; 18-24" \$7.50\*;  
24-30" \$10.00\*

SILVER ANNIVERSARY — 12-18" \$6.00\*; 18-24"  
\$7.50\*; 24-30" \$10.00\*

CARA MIA—12-18" \$6.00\*; 18-24" \$7.50\*; 24-30"  
\$10.00\*

\* \* \* \*

WILLIAM HERTRICH — 12-18" \$7.50\*; 18-24"  
\$10.00\*; 24-30" \$15.00\*

## New And Recent Introductions

BALI HAT—12-18" \$7.50\*; 18-24" \$10.00\*

BETTY SHEFFIELD BLUSH—12-18" \$2.50\*; 18-24"  
\$3.50; 24-30" \$7.50

BETTY SHEFFIELD SUPREME — 12-18" \$7.50\*;  
18-24" \$10.00\*; 24-30" \$15.00\*

CORAL PINK LOTUS—12-18" \$2.50; 18-24" \$3.50;  
24-30" \$7.50

DEAR JENNY—12-18" \$6.00\*; 18-24" \$7.50\*

GEN. LE CLERC—12-18" \$6.00\*; 18-24" \$7.50\*;  
24-30" \$10.00\*

GUILIO NUCCIO VAR. — 12-18" \$7.50\*; 18-24"  
\$10.00\*

HAWAII — 12-18" \$5.00\*; 18-24" \$7.50\*; 24-30"  
\$10.00\*; 30-36" \$12.50\*

JACK McCASKILL—12-18" \$6.00\*

KATE THRASH—12-18" \$2.50; 18-24" \$3.50

KING'S RANSOM—12-18" \$6.00\*; 18-24" \$7.50\*;  
24-30" \$10.00\*

MERCURY—12-18" \$6.00\*; 18-24" \$7.50\*; 24-30"  
\$10.00\*

PENSACOLA RED—12-18" \$6.00\*; 18-24" \$7.50\*

SALLY HARRELL—12-18" \$2.50; 18-24" \$3.50

SOUTHERN CHARM—12-18" \$6.00\*; 18-24" \$7.50\*;  
24-30" \$10.00\*

TOMORROW'S DAWN—12-18" \$7.50\*

## Supreme Quality Camellias

ADOLPHE AUDUSSON VAR. (Special) — 12-18"  
\$2.50; 18-24" \$3.50; 24-30" \$7.50; 30-36" \$10.00

BERENICE BODDY — 12-18" \$2.50; 18-24" \$3.50;  
24-30" \$7.50; 30-36" \$10.00

DR. TINSLEY — 12-18" \$2.50; 18-24" \$3.50; 24-30"  
\$7.50

GRACE BUNTON — 12-18" \$2.50; 18-24" \$3.50;  
24-30" \$7.50

IWANE — 12-18" \$5.00\*; 18-24" \$6.00\*

JESSIE KATZ — 12-18" \$5.00\*; 18-24" \$6.00\*

KATHERINE NUCCIO — 12-18" \$2.50

## Harvey Short's Camellias of Tomorrow

BALLET DANCER — 12-18" \$6.00\*; 18-24" \$7.50\*

FORTUNE TELLER — 12-18" \$6.00\*; 18-24" \$7.50\*;  
24-30" \$10.00\*

WONDERLAND — 12-18" \$6.00\*; 18-24" \$7.50\*;  
24-30" \$10.00

## Sasangua Camellias

CHANSONETTE — 12-18" \$5.00\*; 18-24" \$6.00\*;  
24-30" \$7.50\*

SHISHI GASHIRA — 12-18" \$2.50; 18-24" \$3.50;  
24-30" \$7.50





Tiffany

*Nuccio's Nurseries* 3555 CHANEY TRAIL, ALTADENA, CALIF. Phone: Area Code 213 SYcamore 4-3383



Clark Hubbs